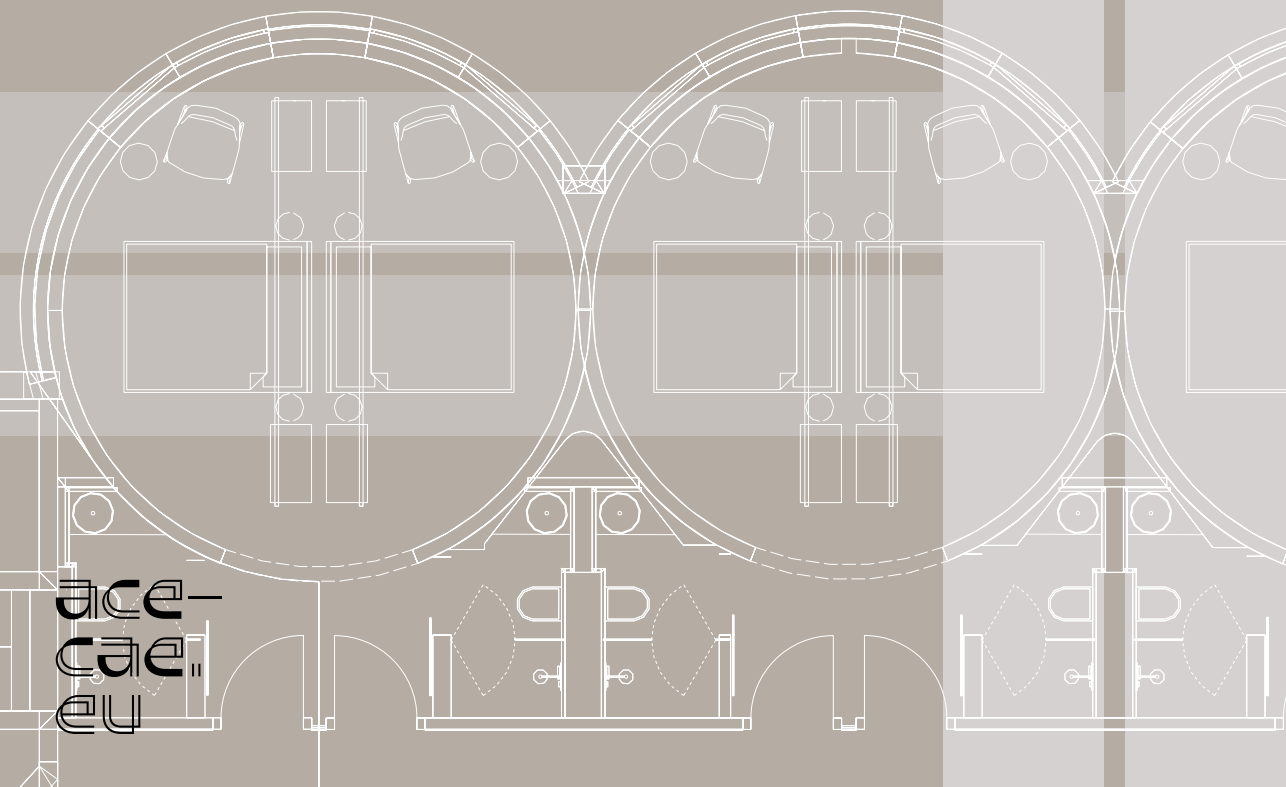


Buildings that define Europe's leading buildings **Form Follows Transformation** Exhibition



Publisher:

Architects' Council of Europe (ACE-CAE)
29, rue Paul Emile Janson
B – 1050 Brussels
ace-cae.eu

Publication Date:

June, 2026

Funded with the Support of:

Co-funded by the European Union through
the Creative Europe Programme.

Funded by the European Union. Views and
opinions expressed are however those of
the author(s) only and do not necessarily
reflect those of the European Union.
Neither the European Union nor the granting
authority can be held responsible for them.

Design/ Layout/ Art Direction:

Red&Grey
redandgrey.ie

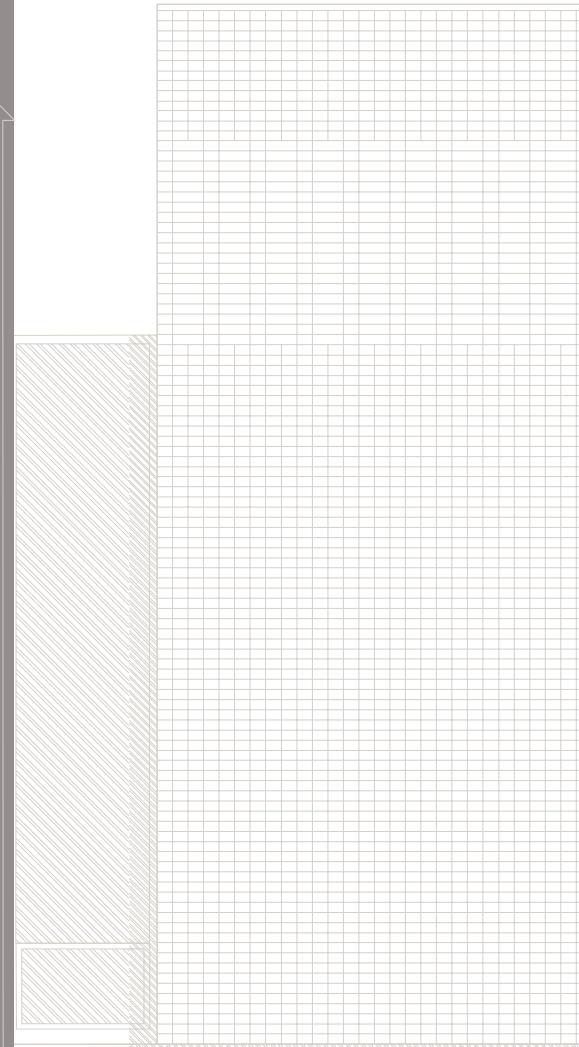
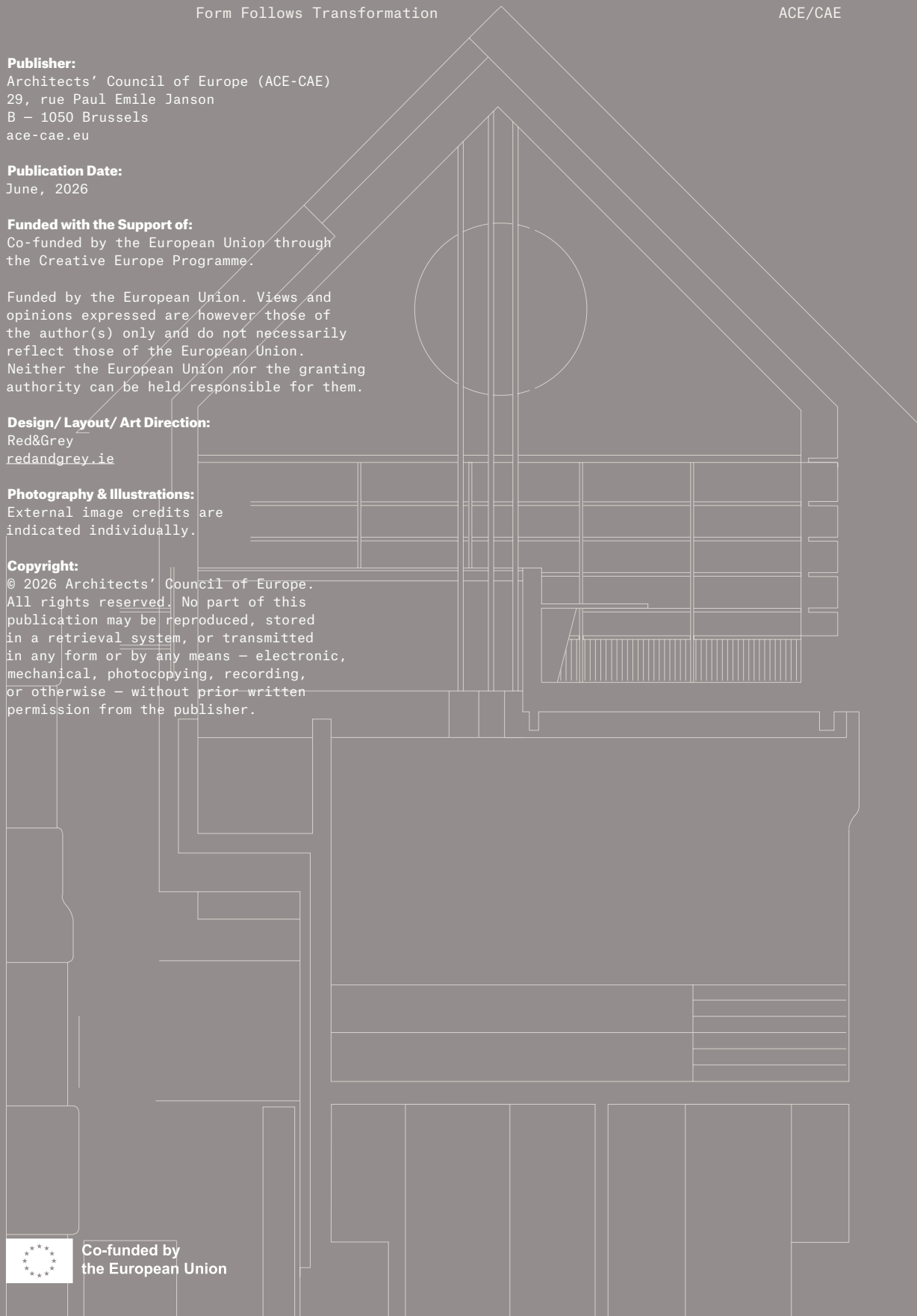
Photography & Illustrations:

External image credits are
indicated individually.

Copyright:

© 2026 Architects' Council of Europe.
All rights reserved. No part of this
publication may be reproduced, stored
in a retrieval system, or transmitted
in any form or by any means – electronic,
mechanical, photocopying, recording,
or otherwise – without prior written
permission from the publisher.

Form Follows Transformation— Moments that redefine Europe's existing buildings



ACE-
CAE
EU



Co-funded by
the European Union



Image: Hampus Berndtson,
Thoravej 29, Copenhagen, Denmark

President's Foreword

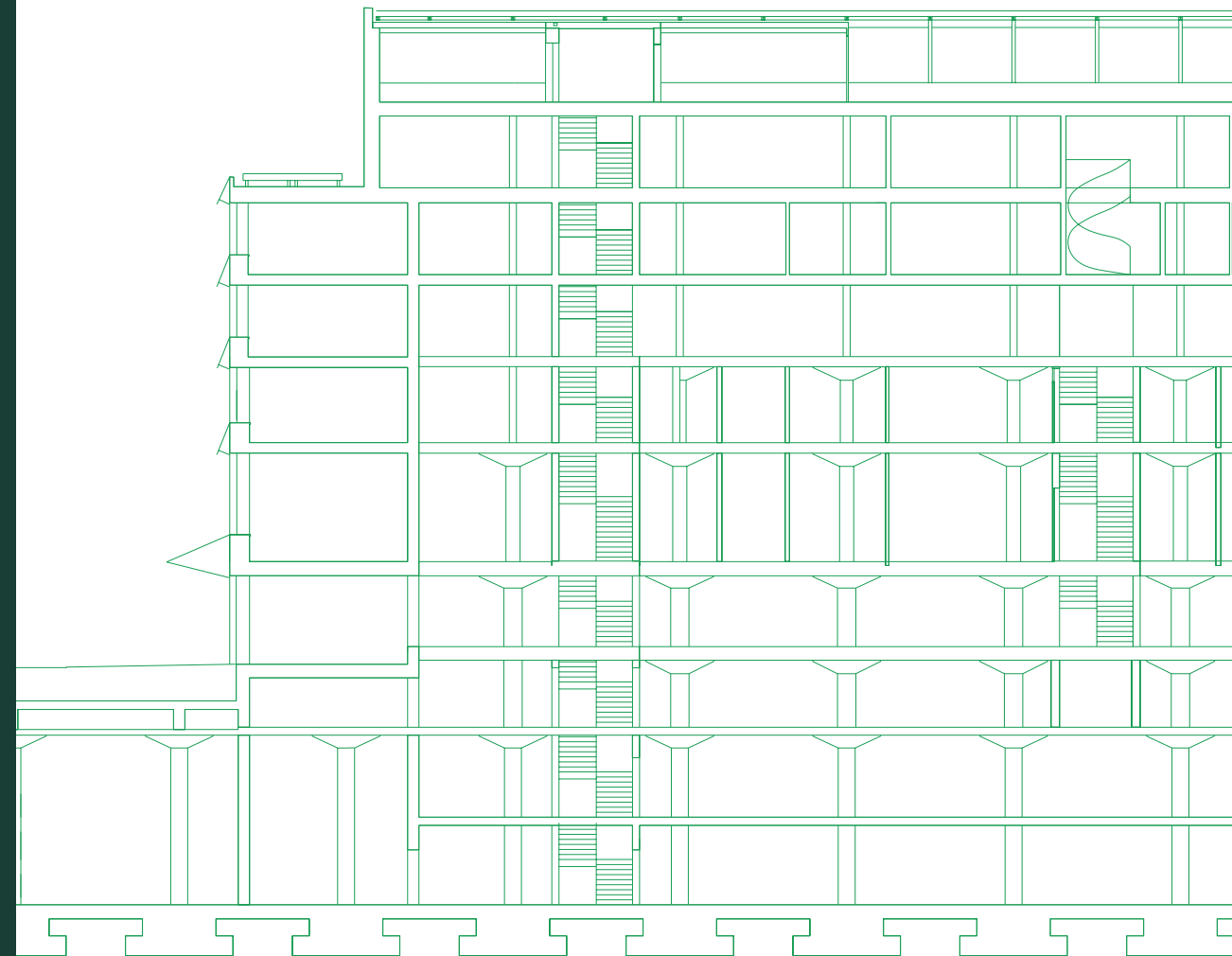
The way we inhabit our planet is a defining driver of the climate and biodiversity crises facing our societies. The construction and buildings sectors consume vast quantities of land, raw materials and fossil fuels, and they contribute to nearly 40% of global greenhouse gas emissions and generate mountains of waste.

Faced with this reality, it is clear that we must urgently rethink how our buildings and cities are designed, built, maintained and renovated, using regulation as a lever to accelerate this transformation.

The exhibition Form Follows Transformation, curated by the Architects' Council of Europe (ACE), celebrates 20 projects that demonstrate this paradigm shift is not only possible but already underway. Each project stands out for its commitment to sustainability, exceptional quality, thoughtful use of materials, and positive impact on people's lives. They prove that high-quality architecture can be a catalyst for change, shaping spaces that are resilient, inclusive, and deeply connected to their communities.

Through these projects, we hope to inspire and empower decision-makers, investors, and professionals to scale up these solutions, driving Europe's transition towards sustainable, resilient, and inclusive built environments.

We are deeply grateful to the ACE Member Organisations, whose dedication and contributions made this exhibition possible, and to the jury, who meticulously reviewed the more than 110 submissions we received. Our heartfelt thanks also go to the architects featured in this exhibition and booklet, whose vision and creativity inspire us all. Finally, we extend our sincere appreciation to the Creative Europe programme of the European Union, which co-funds this activity as part of the CULTUR-ARCH project (2025-2028).





Foreword by the Chair of the Jury

What Already Stands

Europe is full of buildings that remember—structures shaped by time, use and local knowledge. Structures predating our questions about the future and may well outlast our answers. This exhibition is a conversation with that inheritance. Thirty-six projects, gathered from across the continent—each one a response to what it means to build wisely in an age of consequence. They do not speak in a single voice. Sustainable transformation is not a formula but a sensibility—one that must be discovered anew with every threshold, every neighbourhood that asks something different of those who enter it.

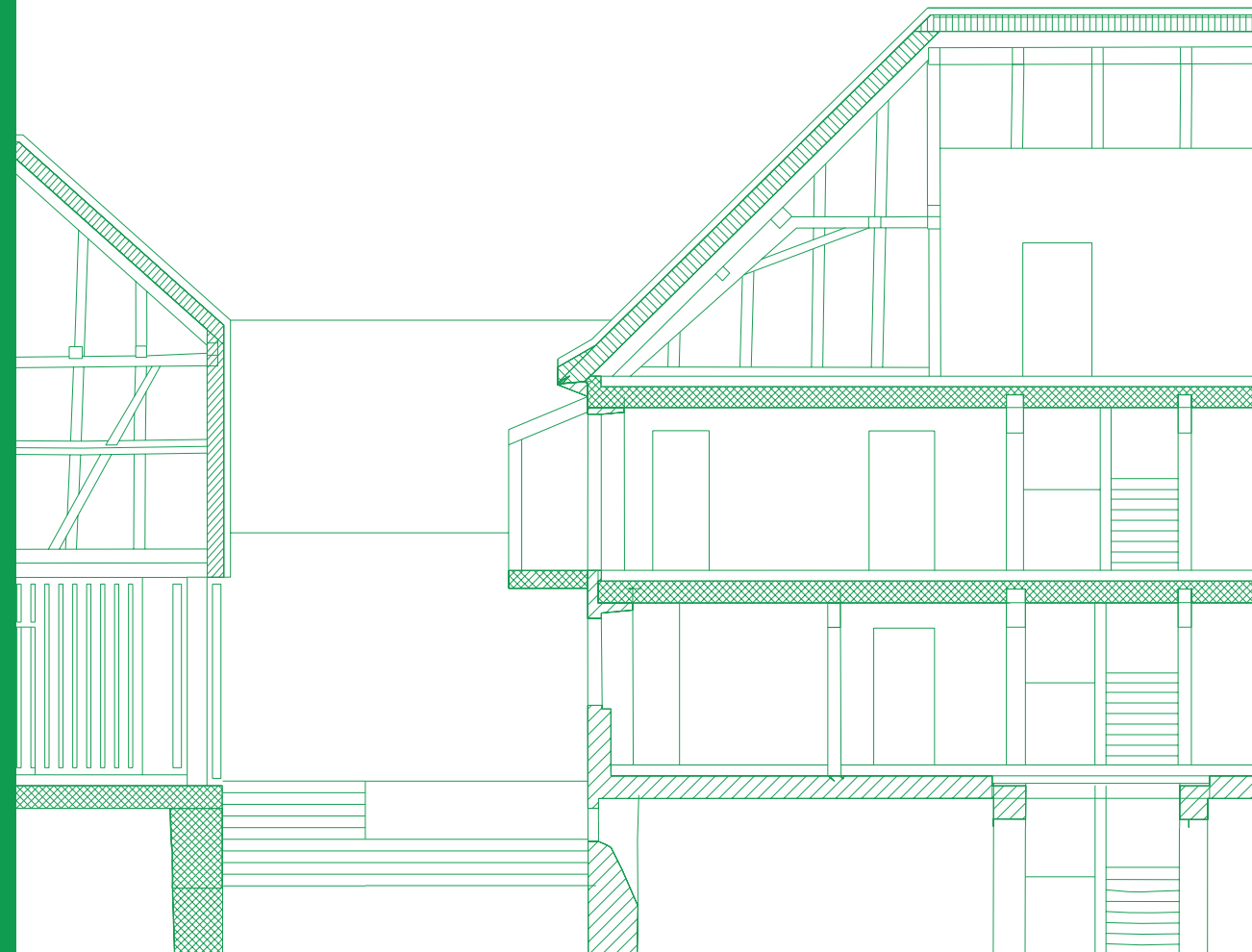
The crisis of our built environment refuses simple remedies. A building with a reduced carbon footprint is a beginning, not an answer. The world presents layered pathologies—ecological, social, material—and architecture, if it is honest, must respond to all of them at once. That requires collaboration across disciplines, across the old boundaries between who designs and who inhabits.

What emerges from these projects is something quieter than a manifesto. A return to proximity: local materials, local knowledge, local hands. A recognition that the most durable solutions are often the least complicated. And an understanding that every existing building carries a character of its own—a logic, a history, a particular way of holding space—that deserves to be heard before anything new is proposed. We should be aware of empty promises about sustainability and solutions that are more about marketing than the environment.

We are learning to listen to buildings rather than merely inscribe ourselves upon them. Architecture was never meant to be a final word. It is a moment in a longer story—one that will be continued by those who come after, and by time itself. The most generous thing a designer can do is leaving room for that continuation.

The jury found in selecting these thirty-six works not only quality but commonality: the quiet conviction, shared across very different contexts, that sustainable transformation is not a local concern but a European one. A thread running through the continent, connecting those who are willing to work with what already stands.

This is where that thread becomes visible.





Introduction

For too long, architecture has been associated with new construction and urban expansion. Yet, as we confront the climate and biodiversity crisis, new opportunities are opening up for us—the poetry of the existing built environment. Our profession is evolving, embracing the challenge of renovating and transforming what the built environment we have inherited, with imagination and boldness.

Renovation and transformation should never be reduced to mere technical upgrades. They are strategic opportunities for functional and spatial reinvention of our living spaces, where energy retrofit and high-quality design work together to create buildings that are sustainable and deeply human.

The twenty exemplary projects in this exhibition represent such critical junctures, moments where architects have re-founded, re-programmed and revitalised Europe's built fabric. To ensure a holistic evaluation of this impact, we have structured the project descriptions according to the eight criteria of the Davos Baukultur Quality System, using this publication as a testing ground for its practical applicability.

Demolition as an exception In Europe, 85–95% of today's buildings will still stand in 2050. While many of these structures are currently inefficient, they embody significant carbon in their materials and hold invaluable economic, social, cultural, and heritage value. Rather than demolishing them, we must prioritise renovation and adaptive reuse to preserve and enhance these assets.

A 'renovation first' principle and "maintenance culture" must guide all decisions, with demolition considered only as a last resort. Feasibility studies should always explore and prioritise architectural solutions that deliver functional and spatial improvements, as well as enhanced well-being for occupants. With millions of vacant homes and underused buildings across Europe, the greatest opportunity lies in revitalising existing structures.

Policy as a catalyst With the revised Energy Performance of Buildings Directive (EPBD), adopted in 2024 as Directive (EU) 2024/1275, the European Union not only set the binding objective of a fully decarbonised building stock by 2050 but also established concrete tools and mechanisms to achieve it. Central to this framework are National Building Renovation Plans, which require each EU member state to design and implement a comprehensive, long-term strategy for transforming its national building stock.

However, regulatory requirements alone are not enough. To bridge the gap between technical necessity and human aspiration, the New European Bauhaus (NEB) emerges as the cultural dimension of this transition. It asserts that transforming our built environment requires a holistic approach, reconciling sustainability with inclusion and beauty. By promoting these values, the NEB ensures that renovation results in spaces that are energy-efficient, accessible, affordable, and aesthetically enriching. Renovation should therefore always be seen as an opportunity to enhance the quality of a living space, rather than simply wrapping buildings up.

Creative conservation and the urban mine The transformation of our built environment cannot be fully realised without embracing circular economy principles as a critical layer of the process. This means moving beyond traditional conservation (- where the focus is on preserving buildings in their original state) to a radical engagement that considers the city as an "urban mine". Here, every building becomes a reservoir of materials, energy, and cultural value, ready to be repurposed to meet the needs of our time.

Adaptation is often more complex and more demanding than new construction. It requires an understanding of historical structural logic and the ability to solve challenges within rigid constraints. This shift redefines the architect's role: no longer just creators of new forms, but strategic editors

and curators of existing resources. It also demands a shift in aesthetics, one that values the "patina of reuse", finding beauty in the resourceful assembly of existing elements.

Designing for climate resilience In the coming decades, Europe will face increasing exposure to extreme weather events, particularly floods and heatwaves. It is essential to renovate our buildings and transform our cities so that they are better adapted to this "new normal".

The projects featured in this exhibition often demonstrate innovation through wisdom. The future of climate-resilient design lies in reclaiming forgotten wisdom. The most effective solutions are often the simplest: passive, locally adapted strategies that harness nature-based approaches and traditional ecological knowledge. From bio-sourced materials to shading systems inspired by centuries-old techniques, these methods offer resilience without complexity.

A social contract: co-creation and inclusion Ultimately, the transformation of the built environment is a social contract. Architecture is a human-centric discipline, and the most successful renovations are those that engage all stakeholders (-users, residents, communities) from the outset. Through participatory design process and by prioritising health, accessibility and a sense of belonging, architects ensure that a building's second life fosters social bonds and meets the needs of its occupants.

The twenty projects showcased in this exhibition are living proof that architecture can be a force for positive change. Each one demonstrates how renovation and adaptive reuse can transform static relics into dynamic, resilient spaces that serve both people and the planet. By embracing circularity, creativity, and community, these works redefine what it means to build for the future; they remind us that this is not just about bricks and mortar, but about reimagining our fundamental relationship with the built environment.

This mission has never been more urgent. In a world marked by geopolitical instability, energy crises and the rise of populism, the ambitions of the Green Deal and the New European Bauhaus take on a new, strategic significance. Achieving a high-quality architecture and built environment is no longer merely an environmental preference, it is a profound social and political act.

By fostering energy independence through renovation and strengthening social cohesion through inclusive design, architecture serves as a stabilising force against the external and internal pressures facing our societies. These projects prove that when architecture is rooted in sustainability and participation, it becomes a powerful engine for unity and progress, offering a clear path forward, even in uncertain times.



Image: Sander Lambrich,
Usquare, Ixelles, Brussels, Belgium



Image: Sander Lambrich,
Usquare, Ixelles, Brussels, Belgium



01	<p>Kellogg's Bremen Industrial Silos Reimagined <i>From Grain Storage to Urban Hospitality</i></p>	28
02	<p>Nordgrün Building Upwards, Living Greener <i>Timber Densification Without Land Expansion</i></p>	30
03	<p>Wittenberg Castle Layers of History <i>Rewriting a Monument for Contemporary Use</i></p>	32
04	<p>Pelėdžiukas Kindergarten From Institution to Community <i>Rehumanising a Soviet-Era Kindergarten</i></p>	34
05	<p>Firefighters' Tower Vertical Heritage Activated <i>A Medieval Tower as Urban Observatory</i></p>	36
06	<p>Suceava Water Plant Industrial Memory as Culture <i>From Infrastructure to Civic Platform</i></p>	38
07	<p>Automatic Mills Grain Silo Conversion The Machine as Public Space <i>A Silo Turned Cultural Landmark</i></p>	40
08	<p>Thoravej 29 Radical Reuse <i>95% Materials, 100% Reinvention</i></p>	42
09	<p>Elektrownia Powiśle Power Plant to Urban Engine <i>Reactivating Industrial Scale</i></p>	44
10	<p>Normandie Building Brutalism Reinhabited <i>Office to Housing Transformation</i></p>	46
11	<p>Weinlager Collective Living in Industrial Frames <i>Warehouse to Community Housing</i></p>	48
12	<p>Usquare Opening the Barracks <i>From Military Enclave to Urban Campus</i></p>	50

13	Old Glassworks Ptuj Reconnecting the City <i>Industrial Ruin to Cultural Landscape</i>	52
14	InGrid Hub Factory to Future Workplace <i>Industrial Shell, Digital Culture</i>	54
15	Tomelloso Caves Hidden Structures Revealed <i>Stabilising the Underground City</i>	56
16	Galenicum HQ Working Within the Factory <i>Circular Space in Industrial Heritage</i>	58
17	Kinsale Library From Ruin to Knowledge <i>A Burnt Mill Reborn as Public Library</i>	60
18	Kunstsilo Monumental Void <i>A Silo Becomes a Cultural Cathedral</i>	62
19	Handelszentrum 16 Reprogramming the Megastructure <i>Warehouse to Mixed-Use Ecosystem</i>	64
20	Hagenhaus Rural Heritage Reactivated <i>Farmstead to Cultural Campus</i>	66
21	Hyparschale Magdeburg Shell Structure Reclaimed <i>From Modernist Experiment to Civic Stage</i>	68
22	Wangen River and City Reconnected <i>From Industrial Ground to Living Landscape</i>	70
23	Aalen Cultural Station After the Fire <i>From Railway Infrastructure to Cultural Hub</i>	72
24	Bokšto Skveras Courtyard City Revealed <i>From Hospital Complex to Urban Quarter</i>	74

25	Herojus School Learning Reimagined <i>From Printing House to Open School</i>	76
26	CULTFORT Fortress Made Porous <i>From Defensive Structure to Cultural Commons</i>	78
27	Curciu Fortified Church Ensemble Light Intervention <i>From Rural Heritage to Shared Space</i>	80
28	PLATO Contemporary Art Gallery Architecture in Motion <i>From Slaughterhouse to Cultural Platform</i>	82
29	KUNSTHALLE Praha Energy Rechanneled <i>From Power Infrastructure to Art Institution</i>	84
30	Silesian Museum Katowice Underground Culture <i>From Coal Mine to Public Landscape</i>	86
31	Nádvorie Collective Ground <i>From Fragmented Blocks to Urban Community</i>	88
32	Palace VEGA IT Vertical Renewal <i>From Ruin to Contemporary Landmark</i>	90
33	City Library Rijeka Knowledge Installed <i>From Industrial Complex to Civic Interior</i>	92
34	Concéntrico Temporary Urbanism <i>From Event to City Laboratory</i>	94
35	Amiens Street Urban Grain Restored <i>From Derelict Plots to Housing Fabric</i>	96
36	Department of Climate, Energy and the Environment HQ Deep Transformation <i>From Obsolete Office to Climate-Ready Workplace</i>	98

Image : Hampus Berrdtson,
Thoravej 29, Copenhagen, Denmark







Kellogg's Bremen Industrial Silos Reimagined—From Grain Storage to Urban Hospitality

Overview

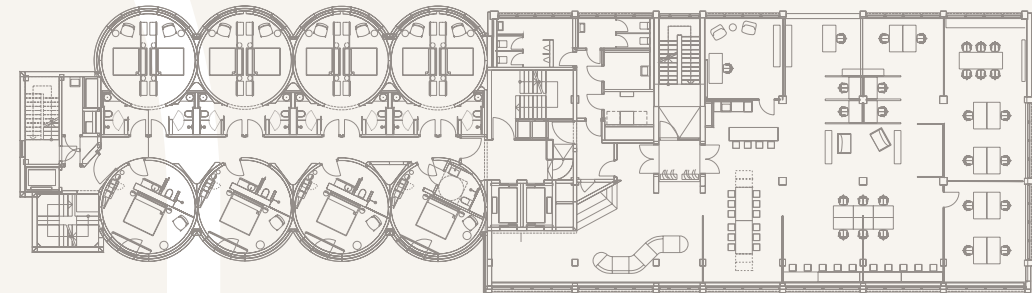
Kellogg's Bremen is an adaptive reuse project in Bremen, Germany designed by Delugan Meissl Associated Architects and completed in 2024. The project transforms former 1970s grain silos and the adjacent Reislager warehouse into a hotel and market hall, creating a new mixed-use destination within the redeveloping Überseestadt district along the River Weser. The design preserves the distinctive concrete silos and their iconic Kellogg's signage while introducing new circular hotel rooms, public spaces, and waterfront terraces. By retaining the existing structures

and integrating contemporary architectural elements, the project combines industrial heritage with modern hospitality and urban life. Sustainable strategies include the reuse of the existing buildings to preserve embodied energy and the use of river water heat pumps to support low-carbon operation. Through this transformation, the project contributes to the revitalisation of the former harbour area and demonstrates how industrial heritage can be reimagined for contemporary urban use.



Images: Piet Niemann
Kellogg's Bremen, Bremen, Germany

Project	Kellogg's Bremen
Location	Auf d. Muggenburg 50, 28217 Bremen, Germany
Architects	Delugan Meissl Associated Architects
Year of Completion	2024
Budget	
Silo Hotel	36 M€ (approx.)
Reislager	25 M€
Type of Procurement	
Silo Hotel	"Hybrid—General Contractor + Individual Awards"
Reislager	General Contractor
Project Type	Commercial building
Surface Area	9,142,52 m ² (Silo Hotel); 9,447,02 m ² (Reislager)
Sustainability Labels	
Silo Hotel	A new building built to KfW 55 efficiency and a renovated part meeting KfW 100 standard
Reislager	A new construction built to KfW 55 standard
Website	www.dmaa.at/work/kelloggs-bremen
Awards	
01	Hotel Design Award, Finalist



Davos Baukultur Quality System

Governance The project forms as part of the broader redevelopment of Bremen's Überseestadt district and was shaped through urban planning processes and coordination with local authorities. While privately developed, the project contributes to the strategic transformation of the former harbour area into a mixed-use urban quarter.

Functionality The conversion of the former grain silos into hotel rooms and the adjacent rice warehouse into a market hall creates accessible and vibrant spaces while preserving the existing structure. The design combines contemporary comfort with the constraints and character of the historic industrial buildings.

Environment By reusing the existing concrete silos and warehouse structures, the project significantly reduces demolition waste and preserves embodied energy. The design also unsealed and greened portions of the site, restoring natural surfaces and enhancing biodiversity. Sustainable energy systems, including river water heat pumps, further support low-carbon operation.

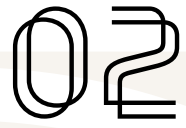
Economy The transformation of the former industrial complex into a mixed-use destination with hospitality, gastronomy, and event spaces strengthens the economic vitality of the area. Durable materials and adaptive reuse contribute to the long-term value and resilience of the development.

Diversity The project accommodates a variety of users, including hotel guests, visitors, and local residents. Public amenities such as the market hall, restaurants, and event spaces activate the waterfront, and encourage social interaction throughout the day.

Context The project responds to its riverfront setting within the transforming Überseestadt district while preserving the distinctive silhouette of the silos. The design maintains a strong dialogue with the industrial heritage and urban character of the former harbour area.

Sense of Place By retaining the iconic silos and the historic Kellogg's signage, the project preserves a recognisable landmark that reflects the site's industrial history. The transformation reinforces the identity of the waterfront and strengthens the collective memory of the harbour landscape.

Beauty The project combines the raw character of industrial architecture with carefully integrated contemporary interventions. The resulting composition highlights the sculptural quality of the silos and creates a striking landmark within the redeveloped district.



Nordgrün Building Upwards, Living Greener—*Timber* *Densification Without* *Land Expansion*

Overview

NORDGRÜN is an innovative residential project in Karlsruhe, Germany, designed by Drescher Michalski Architekten. Completed in 2024, the project transforms an existing two-storey telecommunications building by adding four new storeys in timber construction, creating 21 modern residential units without sealing additional land. The design features a steel “table” structure supporting a lightweight timber extension, clad in monochrome green metal and wood, blending seamlessly with the surrounding

nature. The building promotes sustainable urban living with solar panels, flexible floor plans, and materials chosen for durability and recyclability. Located near the Alter Flugplatz nature reserve, NORDGRÜN revitalises an aging neighbourhood, attracting young families and demonstrating how densification can coexist with green spaces. The project has earned recognition, including nominations for the German Timber Construction Award and the Baden-Württemberg State Architecture Award.

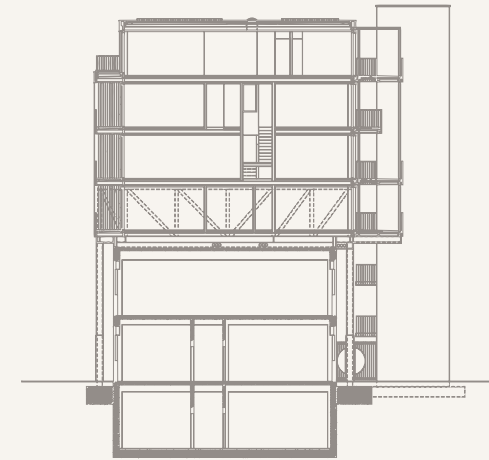


Images: Kim Fohmann
Nordgrün, Karlsruhe, Germany

Project	Nordgrün
Location	Stresemannstraße 28, 76187 Karlsruhe, Germany
Architects	Drescher Michalski Architekten PartG mbB
Year of Completion	2024
Budget	5,9 M€ (approx.)
Type of Procurement	Direct awarding
Project Type	Residential building
Surface Area	3.005 m ² (only for the top extension, without the existing structure)
Sustainability Labels	KFW40 EE
Website	www.drescher-michalski.de/projekte/aufstockung-nordgruen

Awards

01	German Timber Construction Award, 2025—Recognition
02	‘Exemplary Building Award’ of BW Architecture Chamber, 2024—Win
03	German Architecture Award, 2025—Win
04	Holzbauplus Award, 2025/26—Win
05	Holzbaupreis BW, 2026—Win



Davos Baukultur Quality System

Governance The project was developed through coordination with local planning and building authorities to ensure compliance and architectural quality. Although privately commissioned, it contributes to sustainable urban densification within the existing neighbourhood.

Functionality The design prioritises adaptable living: flexible floor plans accommodate diverse household needs, while thoughtful layouts and daylighting ensure comfort for residents. Durable, low-maintenance materials and efficient building systems support long-term performance, allowing the building to evolve with its occupants over time.

Environment By building vertically on an existing structure, the project avoids additional soil sealing and reduces land consumption. The use of recyclable materials such as timber and metal cladding, together with solar panels, supports environmentally responsible building performance.

Economy NORDGRÜN enhances the long-term value of the building through durable materials, energy-efficient design, and adaptable residential layouts. Its proximity to urban amenities further strengthens its attractiveness and economic viability.

Diversity The project primarily provides housing while supporting demographic diversity by attracting residents such as young families. Its integration into a neighbourhood with nearby social and cultural uses contributes to a balanced urban environment.

Context NORDGRÜN respects the scale and urban grain of neighbouring buildings while introducing a distinctive green façade. Its architectural language establishes a dialogue with the adjacent nature reserve and surrounding landscape.

Sense of Place The green metal cladding, timber construction, and visual connection to the nearby open landscape create a recognisable identity for the building. These elements strengthen residents’ attachment to the site and its natural setting.

Beauty NORDGRÜN combines lightweight timber construction with a carefully articulated façade to create a refined architectural expression. The resulting design contributes positively to the visual character of the neighbourhood.

03

Wittenberg Castle Layers of History—Rewriting a Monument for Contemporary Use

Overview

The renovation of the Wittenberg Castle is an adaptive reuse project in Lutherstadt Wittenberg, Germany, designed by Bruno Fioretti Marquez and completed in 2017 for the 500th anniversary of the Protestant Reformation. The project transforms the former residential and military complex into a preacher's seminary, exhibition spaces, the Reformation History Research Library with archive, and a visitor centre, reopening the castle to the public within the UNESCO World Heritage ensemble.

The design approaches the building as a historical palimpsest. Selective “editing” revealed key spatial sequences, including enfilades and brick vaults, while structural interventions were focused on the ends of the L-shaped

volume to create vertical voids for stairs and services. A contemporary attic addition forms a “postscript” to the historic complex, housing the seminary in a cloister-like sequence of rooms and courtyards.

Sustainability is addressed through the reuse of the existing masonry to preserve embodied energy and exploit its thermal mass for climate control, with discreet technical systems integrated into existing shafts. By clearly distinguishing new from old and minimising intervention, the project balances heritage preservation, contemporary program, and environmental responsibility, demonstrating how a monument of national and international significance can be reimagined for modern civic and cultural use.

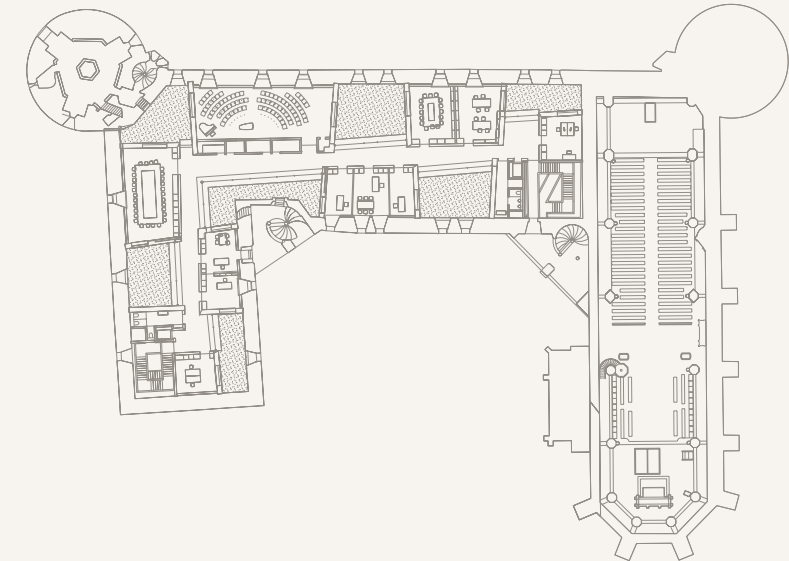


Images: Stefan Müller, Wittenberg Castle, Lutherstadt Wittenberg, Germany

Project	Conversion and extension Wittenberg Castle
Location	Lutherstadt Wittenberg, Germany
Architects	Bruno Fioretti Marquez (ARGE Schloss Wittenberg)
Executive Architect	Heinfried Stuve, AADe Atelier für Architektur & Denkmalpflege (ARGE Partner), DGI Bauwerk Architekten GmbH
Year of Completion	2017
Budget	17,17 M€
Type of procurement	Restricted competition
Project Type	Adaptive re-use of a historical building
Surface Area	10.538 m ²
Sustainability Labels	—
Website	www.bfm.berlin

Awards

01	Deutscher Architekturpreis, 2019—Winner
02	EU Mies Awards, 2019—Nominee
03	Respekt und Perspektive—Bauen im Bestand Preis, 2018—Winner
04	Hannes Meyer Prize BDA, 2018—Honorable Mention



Davos Baukultur Quality System

Governance The project was developed through a transparent, publicly debated process combined with a competitive selection procedure, ensuring rigorous evaluation and meaningful stakeholder involvement.

Functionality The project is structured around an exposed load-bearing structure and enfilade room sequences, divided only by light furniture, allowing easy repurposing. High-quality, handcrafted materials with transparent surfaces create durability, develop patina over time, and emphasise the authenticity and sculptural qualities of the spaces. Public areas are naturally lit, and rooftop additions provide outdoor recreation and panoramic views.

Environment Sustainability is central to the design through the rooftop extension that avoids soil sealing, minimal use of materials and technology, and sustainable choices of materials such as wood, plaster, and terrazzo. Fixtures are designed for reuse and recycling.

Economy The project leverages the building's long-term cultural and educational programmes to ensure stable, low-maintenance operations while enhancing the site's urban presence and touristic value.

Diversity A rich mix of functions—including a visitor centre, castle church access, exhibition spaces, seminary, library, and cultural-historical tours—welcomes people of all ages, abilities, and backgrounds.

Context The design honors the site's history by revealing its original layers, selecting materials and colours that resonate with the existing fabric, and maintaining a sensitive dialogue with the surrounding landscape and urban environment.

Sense of Place Reimagined forecourt and inner courtyard spaces transform the area into a lively public square, reinforcing the building's identity and fostering a strong connection to its surroundings.



Pelėdžiukas Kindergarten

From Institution to Community—*Rehumanising a Soviet-Era Kindergarten for Contemporary Use*

Overview

The Transformation of Soviet Kindergarten “Pelėdžiukas” (“Little Owllet”) is an adaptive reuse and expansion project in Pagiriai, Vilnius County, Lithuania, designed by DO ARCHITECTS under chief architect Gilma Teodora Gylytė and completed in 2021.

The project reimagines a rigid Soviet-era H-type kindergarten, expanding it by 2,200 m² with a wooden extension that increases capacity for 100 children and connects old and new volumes through multifunctional common areas and a central courtyard—the social heart of the facility, supporting play, events, and community gatherings. The design transforms the original institutional character into a warm, open, and inclusive environment. Extensive use of natural, locally sourced wood for façades, interiors, floors, stairs, and furniture creates a tactile, healthy atmosphere, while flexible spaces adapt to play, music, exercise, and

rest. Transparent layouts allow visual connections between indoors and outdoors, fostering curiosity, socialisation, and a sense of belonging.

Sustainability strategies include reusing the existing structure to reduce embodied carbon, preserving mature trees, and employing passive daylighting to limit mechanical systems. By prioritising spatial, emotional, and social transformation, the project empowers children, strengthens community ties, and positions the kindergarten as a multifunctional civic hub. Recognised with the Architects Association of Lithuania Award “Introspection” 2022, the Lithuanian National Architecture Award (2023), and nominated for the EU Mies Awards (2022–2023), it demonstrates how thoughtful design can redefine post-Soviet institutional spaces.



Images: Aistė Rakauskaitė, Lukas Jusas, Emilija Martinkevič, Gilma Teodora Gylytė Pelėdžiukas Kindergarten, Vilnius, Lithuania

Project	Transformation of Soviet Kindergarten “Pelėdžiukas”
Location	Lentvario g. 1A, Vilnius, 27102 Vilniaus m. sav., Lithuania
Architects	DO Architects
Chief Architect	Gilma Teodora Gylytė
Year of Completion	2021
Budget	2,2 M€ (approx.)
Type of procurement	Restricted competition
Project Type	Public institutional building
Surface Area	2.200 m ²
Sustainability Labels	—
Website	www.doarchitects.lt/#/kindergarten-peledziukas-vilnius-county-lithuania

Awards

01	EU Prize for Contemporary Architecture—Mies van der Rohe Awards, 2022–2023 —Nominated (Education)
02	National Architecture Awards of Lithuania, 2023—Winner (Sociocultural Architecture)
03	Architects Association of Lithuania Award 2022 “Introspection”



Davos Baukultur Quality System

Governance The project was developed through inclusive workshops with staff, parents, and children to ensure transparent decision-making. This participatory approach guided the design while balancing functional and social objectives.

Functionality The project creates adaptable, multifunctional spaces, including courtyards and central gathering areas, that support play, learning, and community events. Natural materials, daylighting, and flexible layouts promote healthy and stimulating environments for children.

Environment By reusing the existing Soviet-era structure and preserving mature trees, the project minimises environmental impact and embodied carbon. Durable and recyclable materials further enhance the sustainability of the design.

Economy The design enhances long-term value through low-maintenance materials and multifunctional spaces that strengthen community engagement. The project contributes to the social and economic vitality of the neighbourhood.

Diversity The project fosters inclusivity by accommodating a wide range of users, including children, staff, and the broader community. Flexible spaces support multiple activities, promoting social interaction and cohesion.

Context The project responds to its Soviet-era surroundings by introducing warmth, openness, and a human scale. The design establishes a positive dialogue with the existing urban and architectural fabric.

Sense of Place The project strengthens a sense of belonging through central communal spaces and the welcoming environment. It enhances local pride and positions the kindergarten as a civic and social hub.

Beauty The project combines functional design with tactile and aesthetic warmth through natural materials and thoughtful detailing. Its architectural quality has been recognised through national awards and international shortlisting.

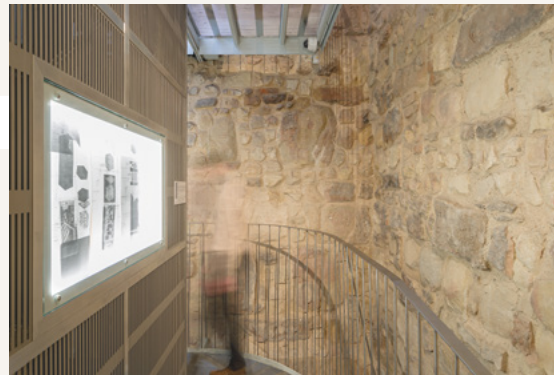
05

Firefighters' Tower Vertical Heritage Activated—A Medieval Tower as Urban Observatory

Overview

The Firefighters' Tower is an adaptive reuse project in Cluj-Napoca, Romania, completed in 2023. Originally built in the 15th century as a medieval watchtower, the project restores the historic stone structure while introducing contemporary elements that celebrate its evolving civic role. Intrusive 20th-century interventions, including concrete floors and a glass pyramid, were removed, and a translucent core with an elevator was added to improve accessibility. The tower now functions as a vibrant urban observatory and cultural landmark. A panoramic deck features a scale model of Cluj-Napoca, a mirrored ceiling,

and augmented reality installations narrating its layered history. Reversible, minimalist interventions preserve the original fabric while enabling exhibitions, educational programs, and public events. Blending heritage with innovation, the project has attracted over 170,000 visitors in two years and sparked dialogue on revitalising historic sites. Recognised with national and international awards, it demonstrates how adaptive reuse can strengthen cultural identity, foster community engagement, and create an inclusive, sustainable public space at the heart of the city.

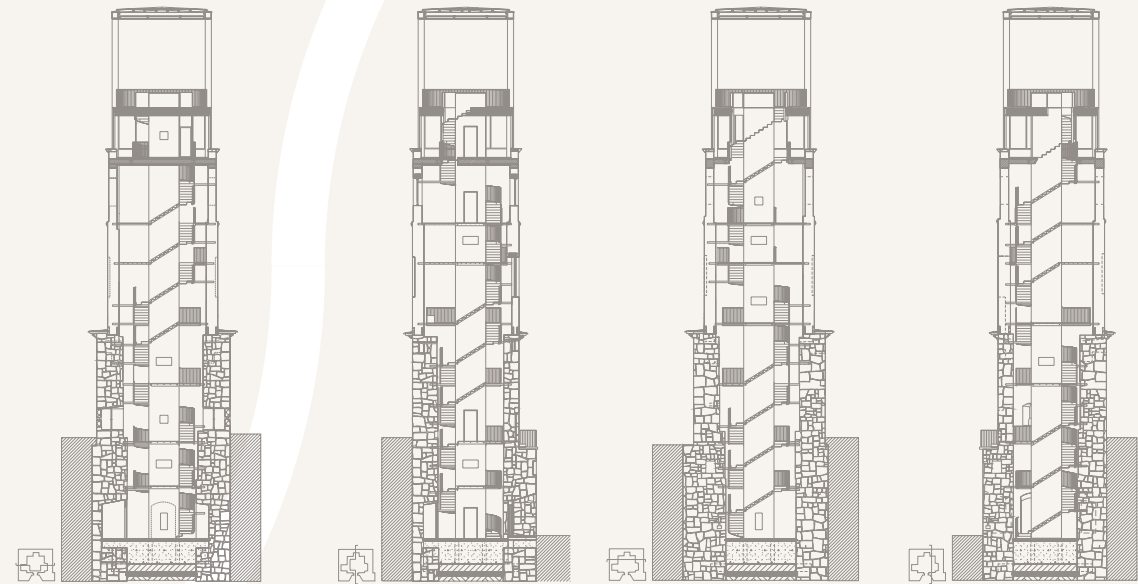


Images: Cosmin Dragomir, Vlad Sebastian Rusu, Firefighters' Tower, Cluj-Napoca, Romania

Project	Retrofit and adaptive reuse of a firefighters' tower
Location	Cluj-Napoca, Romania
Architects	Vlad Sebastian Rusu Architecture Office; Octav Silviu Olănescu Architecture Office
Year of Completion	2023
Budget	2 M€
Type of procurement	International competition
Project Type	Adaptive reuse of a historical building
Surface Area	375 m ²
Sustainability Labels	—
Website	visitcluj.ro/tourist_spot/turnul-pompierilor

Awards

01	International B.E.T.A. Awards Biennale, 2024—Nomination
02	Mies van der Rohe European Union Prize for Contemporary Architecture, 2023—Nomination
03	National Biennale of Architecture, 2023—1st Prize (ex-aequo) in Heritage Recovery and Identity Interpretation
04	Transylvania Architecture Biennale, 2023—1st Prize in Cultural Heritage Architecture Section



Davos Baukultur Quality System

Governance The project was initiated through an international design competition in 2017, ensuring transparency, public engagement, and a participatory decision-making process involving both local and international experts.

Functionality The tower was transformed into a versatile urban observatory and cultural space, adaptable for exhibitions, events, and public access, while preserving its historic structure and ensuring long-term usability.

Environment The revitalisation prioritised adaptive reuse, local materials, and minimal waste, embodying the "5 Rs" (refuse, reduce, repair, reuse, recycle) and reducing the environmental footprint through durable, low-maintenance solutions.

Economy By reactivating a historic landmark, the project boosted local tourism and cultural programming, ensuring economic sustainability through diverse events and minimal long-term maintenance costs.

Diversity The tower now serves as an inclusive public space, accessible to all ages and abilities, hosting a mix of cultural, educational, and social activities that engage diverse communities.

Context The design respects the tower's historic character while integrating contemporary elements, creating a harmonious dialogue with Cluj-Napoca's urban fabric and reinforcing its role as a civic landmark.

Sense of Place The project strengthens local identity by reconnecting citizens with their heritage, using features like a city scale model and panoramic views to foster a sense of belonging and urban pride.

Beauty The tower's elegant blend of historic masonry and modern interventions—such as the translucent core and mirrored ceiling—creates a striking aesthetic experience that enhances the cityscape and inspires public admiration.



Suceava Water Plant Industrial Memory as Culture—From Infrastructure to Civic Platform

Overview

The Suceava Water Plant is an adaptive reuse project in Suceava, Romania, designed by AGD - Arhitectura Grafica Design. Originally built in 1912 by Austrian and German engineers, the abandoned industrial complex has been transformed into a Centre for Architecture, Urban Culture, and Landscape. The project preserves the building's brick walls, metal structures, and underground tanks as "technological frescoes," celebrating its industrial heritage while introducing minimal, precise interventions. A new geometric access carved into the hillside creates a semi-public piazza, restored windows enhance daylight and energy performance, and carbon fiber reinforcements stabilise the structure. The reshaped

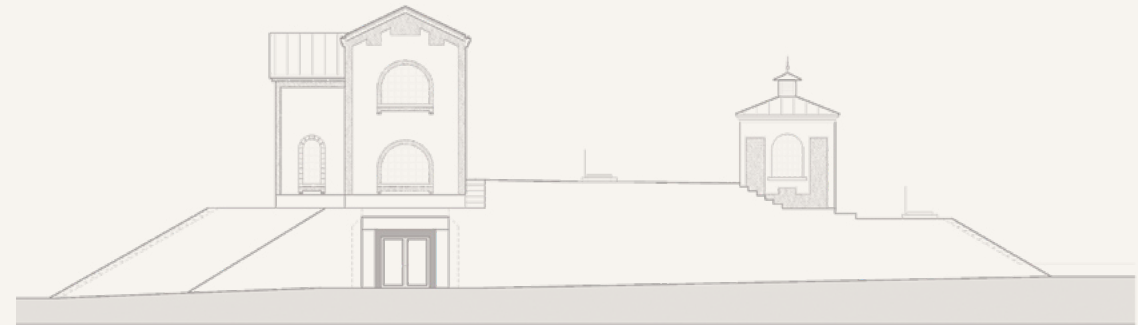
earth covering the tanks supports passive climate control, while flexible interiors allow exhibitions, conferences, educational programmes, and community activities. Reused industrial materials maintain the site's historic character and tactile authenticity.

By combining heritage conservation with contemporary programmatic needs and sustainable strategies, the project revitalises a post-industrial landmark, strengthens civic identity, and catalyzes urban regeneration, demonstrating how adaptive reuse can transform industrial relics into cultural and civic assets.

Images: Andrei Margulescu, Constantin Gorcea, Razvan-George Gorcea, Cristian Istrati, Ruxandra Maszni, Alexandra Aramă, Mihaela Clopțaru, Suceava Water Plant, Suceava, Romania



Project	Water Plant, Centre for Architecture, Urban Culture and Landscape
Location	Suceava, Romania
Architects	AGD—ARHITECTURA GRAFICA DESIGN, SUCEAVA, ARCHITECTURE AGD, MOLD PROIECT, ARCHITECTS: Sorin Pentilescu, Mircea Curteanu, Ion Andriu, Nicolae Procopov
Year of Completion	2012
Budget	280.000 € (approx.) (this cost does not include the operations carried out through volunteering and the materials provided by specialised sponsors)
Type of procurement	Internal Team Competition/Voluntary Participation
Project Type	Adaptive reuse of a historical building
Surface Area	486 m ²
Sustainability Labels	—
Website	oar.archi/buna-practica/uzina-de-apa-suceava-centru-de-arhitectura-cultura-urbana-si-peisaj
Awards	
01	National Architecture Biennial Bucharest, 2014—Award, Cultural Heritage Architecture Section
02	Mies van der Rohe Prize for Contemporary Architecture, 2013—Nomination
03	Architecture Annual, OAR Iași, 2013—Award, Restoration Section



Davos Baukultur Quality System

Governance The project was initiated by the Order of Architects and developed in collaboration with public authorities, heritage experts, and local stakeholders. This coordinated process ensured transparency and shared responsibility while reinforcing the cultural significance of regenerating the historic water plant as a civic and professional landmark.

Functionality The historic water plant is adaptively reused to accommodate exhibition spaces, offices, archives, and event areas. A flexible spatial organisation allows multiple uses and future adaptation. Minimal, reversible interventions and passive comfort strategies guarantee durability and user well-being.

Environment The project prioritises regeneration over demolition, extending the life of the existing building and avoiding new land consumption. Repair, reuse, structural consolidation, and passive thermal performance significantly reduce embodied and operational energy.

Economy By transforming a neglected industrial structure into an active cultural hub, the project generates long-term social and economic value. Durable construction, low-maintenance materials, and long-life design strategies ensure efficient operation while strengthening the building's role as a catalyst for cultural activity.

Diversity The project supports a wide range of cultural, professional, and educational activities. Exhibitions, public events, and institutional programmes attract diverse audiences and encourage interaction between architects, students, researchers, and citizens, fostering a dynamic platform for cultural exchange.

Context The intervention preserves the industrial geometry and materiality, while the new public piazza reconnects the site to the city.

Sense of Place Restoring and activating this historic landmark re-establishes its presence in collective memory. The renewed building becomes a place of encounter and cultural exchange, strengthening identity and civic pride while reconnecting the community with an important element of its industrial heritage.

Beauty Beauty emerges from the compelling dialogue between raw industrial heritage and precise contemporary insertions, generating an authentic and memorable spatial atmosphere.

07

Automatic Mills Grain Silo Conversion

The Machine as Public Space—A Silo Turned Cultural Landmark

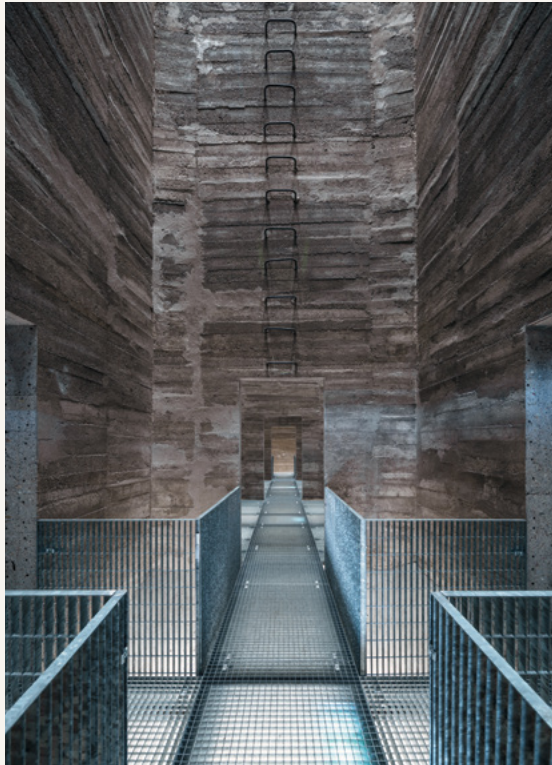
Overview

The Automatic Mills Grain Silo Conversion is an adaptive reuse project in Pardubice, Czech Republic, designed by Prokš Příkryl architekti (Martin Prokš and Marek Příkryl) and completed in 2023. The project transforms a 1924 grain silo—part of Josef Gočár's national cultural monument—into a vibrant cultural and social hub along the Chrudimka River.

The 1,848 m² design retains the silo's iconic verticality and patina while activating public and event spaces. The ground floor opens beneath exposed grain bins, the upper hall hosts exhibitions and events, and a roof terrace with a

bar offers panoramic city views. Minimal interventions—glass-concrete floors, restrained interiors, ramps, and elevators—enhance light, circulation, and accessibility.

Sustainability is embedded through geothermal heating, internal insulation, and circular design principles. By balancing heritage preservation with contemporary cultural functions, the project uncovers the silo's "machine-for-tress" character, fosters community engagement, and has earned the National Grand Prix 2024, Czech Architecture Award 2024 shortlist, and EU Mies Awards nomination.

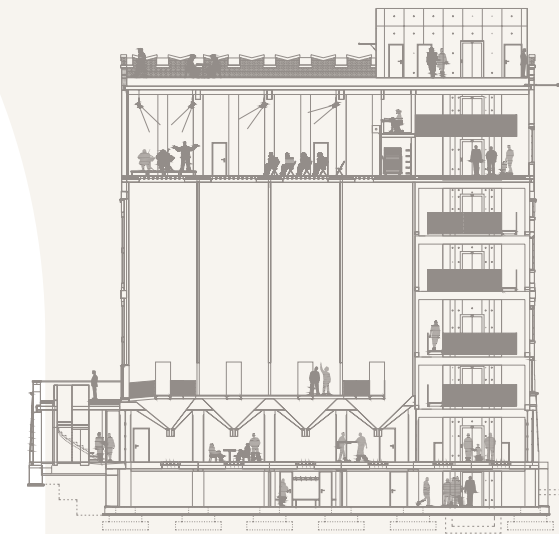


Images: Petr Polák, Automatic Mills Grain Silo Conversion, Pardubice, Czech Republic

Project	Automatic Mills Grain Silo Conversion
Location	Automatické mlýny 1963, 530 03 Pardubice, Czech Republic
Architects	Prokš Příkryl architekti, Martin Prokš, Marek Příkryl
Year of Completion	2023
Budget	3,4 M€
Type of Procurement	Private project
Project Type	Public/institutional building; Adaptive reuse of a historical building; Public space
Surface Area	1,131 m ²
Sustainability Labels	—
Website	www.automatickemlyny.eu

Awards

01	National Grand Prix, 2024—Winner in the category of Reconstruction
02	Czech Architecture Award, 2024—Finalist
03	EUMies Awards, 2025—Czech Republic Nominee



Davos Baukultur Quality System

Governance The project was developed through coordinated engagement between the private investor and regional and city authorities to ensure transparent and high-quality implementation. This collaborative approach guided both heritage preservation and contemporary interventions.

Functionality The project creates adaptable spaces for exhibitions, workshops, and events while maintaining comfort, accessibility, and healthy conditions. Natural ventilation, daylighting, and carefully designed circulation paths support long-term usability for a variety of cultural activities.

Environment By reusing the existing grain silo and brown-field site, the project avoids additional land consumption and preserves embodied energy. Repairs, recycling, and minimal interventions follow circular design principles to reduce environmental impact.

Economy The project enhances long-term value by providing a vibrant cultural, educational, and tourism destination. Durable, low-maintenance materials and integrated facilities contribute to economic resilience and sustained public engagement.

Diversity The project accommodates a wide range of users, including artists, students, residents, and visitors of all ages and abilities. Mixed programming and flexible spaces encourage inclusion and foster community interaction.

Context The project respects Gočár's monumental silo while introducing contemporary interventions that open the parterre and activate the riverside. The design maintains a dialogue with the surrounding urban fabric and preserves the historic character of the site.

Sense of Place By preserving the silo's iconic verticality and patina, the project strengthens local identity and collective memory. The transformed space becomes a recognisable landmark that connects the city to its industrial and cultural heritage.

Beauty The project combines industrial monumentality with subtle contemporary design, creating an atmospheric and visually striking landmark. Its aesthetic qualities reinforce both heritage value and the appeal of a vibrant public space.



Thoravej 29 Radical Reuse—95% Materials, 100% Reinvention

Overview

Thoravej 29 is an adaptive reuse project in Copenhagen, Denmark, designed by pihlmann architects for The Bikuben Foundation and completed in the 2020s. The project transforms a 1960s factory into a 6,224 m² community and cultural hub, hosting stages, galleries, studios, offices, a production kitchen, café, and meeting spaces for 150 people across 30 organisations.

The design embraces radical material reuse: 95% of existing concrete slabs, steel beams, bricks, and fittings were re-purposed, reducing CO₂ emissions by up to 88%. Floor slabs were converted into staircases, façade elements became pavement, and salvaged components were

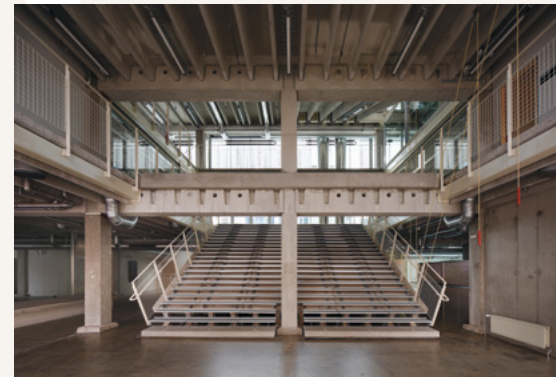
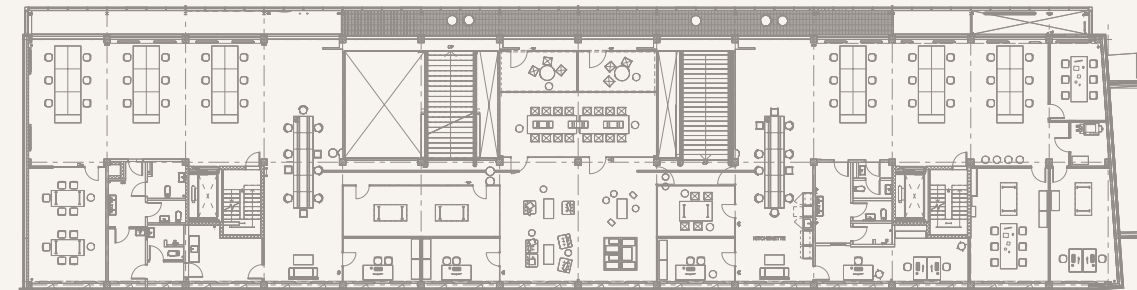
reimagined as furniture, exemplifying a circular economy. By combining heritage preservation with contemporary programme, the project creates flexible, inspiring spaces while minimising environmental impact.

Thoravej 29 has received international recognition, including shortlist for the EUMies Awards 2026, Detail Construction Award 2026 for Best Renovation and The Copenhagen Municipality Building Award 2025, and demonstrates how sustainable adaptive reuse can catalyze urban regeneration, foster community engagement, and blend creativity with functionality in Copenhagen's evolving Nordvest district.

Project	Thoravej 29
Location	Copenhagen, Denmark
Architects	Pihlmann Architects
Year of Completion	2024
Budget	16 M€
Type of Procurement	Private project
Project Type	Adaptive reuse of an industrial building
Surface Area	6.224 m ²
Sustainability Labels	DGNB Gold & DGNB Diamond
Website	www.thoravej29.dk/en

Awards

01	Bauwelt IUPA Award, 'Special Prize', 2025
02	Copenhagen Municipality Building Award, 2025
03	Danish Design Award, 2025
04	Detail Construction Award, 'Best Renovation', 2026
05	EUMies Awards, shortlisted, 2026
06	Licitationen Building Awards, 'Building of the Year', 2024
07	The Architectural Review, 'New into Old Award', finalist, 2025
08	The Danish Association of Architects, 'Årets Arne Award', nominated, 2026
09	The Danish Renovation Award, 2025



Images: Hampus Berndtson, Thoravej 29, Copenhagen, Denmark

Davos Baukultur Quality System

Governance The project was developed through a competitive process organised by The Bikuben Foundation, ensuring transparency and collaboration among architects, engineers, and the local community, with a focus on inclusive and participatory decision-making.

Functionality Thoravej 29 is designed for long-term adaptability, transforming a former factory into a versatile hub with stages, galleries, studios, and offices, all while maintaining comfort, accessibility, and flexibility for diverse users and activities.

Environment The project exemplifies circular economy principles, reusing 95% of existing materials—such as concrete slabs, steel, and bricks—and reducing CO₂ emissions by up to 88%, minimising waste and promoting durable, low-maintenance construction.

Economy By repurposing an existing structure and creating a mixed-use cultural and community hub, Thoravej 29 enhances the local economy, attracts diverse users, and ensures long-term value through sustainable, low-cost maintenance.

Diversity The building fosters inclusion and mixed-uses, hosting 30 organisations and 150 people in spaces for art, work, and social interaction, catering to a wide range of ages, abilities, and backgrounds.

Context The design respects and enhances its urban surroundings, integrating the building's industrial heritage with contemporary needs, and opening the once-closed facade to strengthen connections with the neighbourhood.

Sense of Place Thoravej 29 reinforces local identity by preserving the building's history while creating a dynamic, welcoming space that fosters community engagement and a shared sense of belonging.

Beauty The project's innovative reuse of materials and thoughtful design, such as transformed staircases and open facades, create a striking aesthetic that blends functionality with artistic expression, earning recognition as Copenhagen's Building of the Year 2024.



Elektrownia Powiśle

Power Plant to Urban Engine— *Reactivating Industrial Scale*

Overview

Elektrownia Powiśle is a large-scale adaptive reuse project in Warsaw, Poland, transforming the city's first power plant, established in 1904, into a vibrant mixed-use urban complex. Completed after more than a decade of redevelopment, the project reopens the formerly fenced industrial site to public life, introducing new squares, pedestrian passages, and the restored route of Elektryczna Street while reinforcing the identity of the Powiśle district.

The design carefully preserves key historic structures, including the boiler house and engine room, adapting them into retail spaces and a lively food hall. Original steel elements, chimneys, and coal infrastructure were

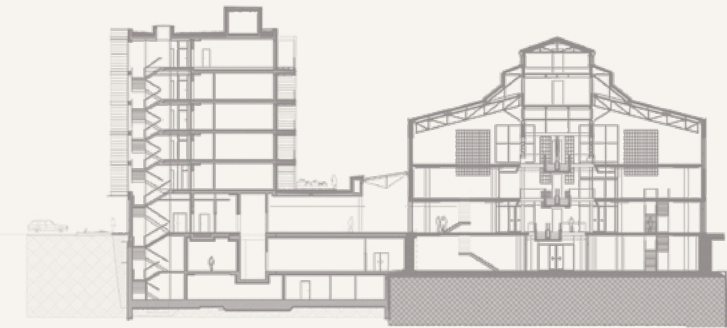
conserved and integrated into the new programme, while contemporary additions reinterpret the site's industrial language through steel, brick, and glass.

Sustainability is central to the project's approach. By prioritising preservation over demolition, the redevelopment reduces embodied carbon and construction waste, while modern insulation, high-performance systems, and energy-efficient technologies are discreetly integrated into the historic fabric. Completed with the opening of the Barceló Warsaw Powiśle in 2023, Elektrownia Powiśle demonstrates how industrial heritage can be reimaged as a dynamic urban destination.

Project	Elektrownia Powiśle
Location	Warsaw, Poland
Architects	APA Wojciechowski Architects
Year of Completion	2020
Budget	Confidential
Type of Procurement	Architecture design competition
Project Type	Adaptive reuse of a historical building; Mixed-used building; Public space; Commercial building
Surface Area	90.795 m ²
Sustainability Labels	BREEAM
Website	elektrowniapowisle.com

Awards

01	EU Mies Award, 2022—Nomination
02	MIPIM Award, 2021—Best Mixed-Use Project
03	Property Design Awards, 2024—Best Hotel
04	CEEQA Awards, 2023—ESG Champion Building of the Year
05	SARP (Association of Polish Architects) Award, 2021—Nomination for Award of the Year
06	Golden Trezzini Award, 2021—Finalist



Davos Baukultur Quality System

Governance The project was delivered through close cooperation between private investors, the City of Warsaw and heritage conservation authorities. Transparent planning procedures, consultation with municipal bodies and engagement of an experienced interdisciplinary design team ensured respect for the historic fabric and alignment with Warsaw's riverfront regeneration strategy. Its integration with public transport, including the nearby Centrum Nauki Kopernik metro station, reflects coordinated urban governance.

Functionality The adaptive reuse of large-span industrial halls enabled flexible, mixed-use programming—retail, gastronomy, offices, housing and hospitality—supporting long-term adaptability. Clear circulation, step-free access and strong urban permeability ensure comfort, accessibility and everyday usability.

Environment By prioritising preservation over demolition, the project significantly reduced embodied carbon and material waste. Historic structures were retained and upgraded with improved insulation, efficient glazing and modern mechanical systems, enhancing operational performance while supporting sustainable mobility in a dense, transit-oriented location.

Economy The redevelopment transformed an underused industrial site into a vibrant destination, generating employment, attracting tourism and strengthening property values

in Powiśle. Durable materials and long-life construction solutions support stable operation and long-term economic resilience.

Diversity A rich mix of uses—commercial, residential, cultural and leisure—attracts varied user groups throughout the day. The combination of international brands and local concepts fosters social and economic diversity within an inclusive public realm.

Context The intervention carefully preserves brick façades, steel frames and industrial details, while new volumes reinterpret the historic language through contemporary materials. Permeable passages reconnect the site with surrounding streets and the Vistula riverfront, reinforcing continuity with the district's urban grain.

Sense of Place Retained industrial elements anchor collective memory and local identity. Newly created courtyards, terraces and internal streets foster social interaction and strengthen attachment to place, transforming a formerly closed facility into an open civic destination.

Beauty The dialogue between restored heritage fabric and minimalist contemporary additions results in a coherent and distinctive architectural composition. Careful detailing, material authenticity and atmospheric public spaces create a strong aesthetic and spatial impact.



Images: Minus Osiem, Radek Gałczyński, Elektrownia Powiśle, Warsaw, Poland



Normandie Building

Brutalism Reinhabited— *Office to Housing Transformation*

Overview

The Normandie Building Housing Conversion is an adaptive reuse project in Geneva, Switzerland, designed by Brauen Wälchli Architectes. The project transforms a 1970s office building originally designed by Jean-Marc Lamunière into 121 rental apartments, addressing the city's housing demand while preserving a listed example of brutalist architecture.

Known for its prefabricated concrete façades and distinctive metal walkways, the building's historic elements were carefully restored to maintain its architectural identity. The intervention introduces diagonal interior walls that connect the load-bearing columns to the façade structure, creating distinctive living spaces with fully glazed loggias

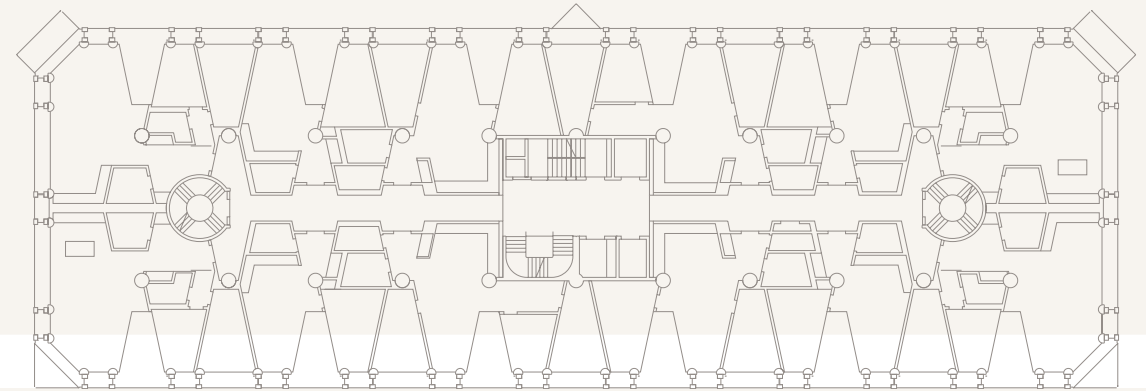
that maximise natural light and views. Sustainability and circular economy principles guide the transformation, with the reuse of the existing structure and materials minimising environmental impact.

The project also meets the Swiss Minergie energy certification standard. Shared spaces on the ground floor encourage community interaction and social diversity, reinforcing the building's connection to the surrounding neighbourhood. By combining heritage preservation with contemporary housing and environmental performance, the project demonstrates how office buildings can be thoughtfully adapted to meet present-day urban needs.



Images: Ariel Huber, Normandie Building, Geneva, Switzerland

Project	Conversion of an office building into housing
Location	Geneva, Switzerland
Architects	Brauen Wälchli Architectes
Year of Completion	2025
Budget	Confidential
Type of Procurement	Restricted competition
Project Type	Adaptive reuse
Surface Area	17.600 m ²
Sustainability Labels	Minergie rénovation
Website	www.brauenwaelchli.com
Awards	
01	International Award for the Transformation of Office Buildings into Housing, Paris—Finalist
02	Romandy Real Estate Award, 2025—Winner, Renovation & Transformation & Architecture Distinction
03	Prix SIA, 2026—Finalist



Davos Baukultur Quality System

Governance The project involved a transparent, participatory process through parallel study mandates and ongoing dialogue with heritage authorities, ensuring inclusive decision-making and public engagement.

Functionality By adapting the original office structure into flexible, comfortable residential spaces—with innovative diagonal walls and loggias—the project ensures long-term adaptability and user well-being.

Environment The conversion of offices into 121 Minergie-certified apartments extends the building's life, reuses its heritage structure and materials, achieves radical densification without expanding its footprint, and exemplifies sustainable land use and circular economy principles.

Economy By repurposing the building and combining diverse, sustainable housing with energy-efficient design, the project reduces operating costs, maximises long-term value, and ensures the site's enduring appeal.

Diversity The site offers diverse apartment typologies, with loggias, views, and shared spaces that foster social interaction, community cohesion, and a vibrant, dynamic living environment.

Context The project preserves the building's historical substance and original materials while integrating contemporary interventions enhancing the site's quality and harmoniously engaging with Geneva's urban fabric and surroundings.

Sense of Place By restoring and celebrating the building's iconic 1970s identity, the conversion into housing strengthens local attachment and a sense of belonging, reinforcing the character of the Champel neighbourhood.

Beauty The thoughtful blend of historic structure and contemporary interventions creates a visually striking, emotionally resonant space that redefines the building's aesthetic appeal.



Weinlager Collective Living in Industrial Frames—Warehouse to Community Housing

Overview

The Weinlager Residential Conversion is an adaptive reuse project in Basel, Switzerland, designed by Esch Sintzel Architekten and completed in 2023. The project transforms a 1955 wine warehouse built for Coop into a residential complex with 64 apartments, commissioned by the non-profit Stiftung Habitat. Reusing the robust industrial structure, the design retains the three basement levels for parking while adding four new floors above the existing framework.

The architecture celebrates the building's industrial character, with exposed mushroom columns forming key interior features. Shared "rues intérieures" encourage interaction among residents, while façade cutbacks,

balconies, and generous glazing introduce daylight and outdoor connections. The programme also includes a café, commercial spaces, guest rooms, music rehearsal areas, and a collective roof terrace, creating a lively residential environment.

Sustainability is central to the project, achieving significant grey energy savings through structural reuse, supported by photovoltaic panels and a groundwater heat pump that covers much of the building's energy needs. Located in the emerging Lysbüchel Süd district, the project promotes social diversity and demonstrates how industrial heritage can be reimagined as contemporary collective housing.

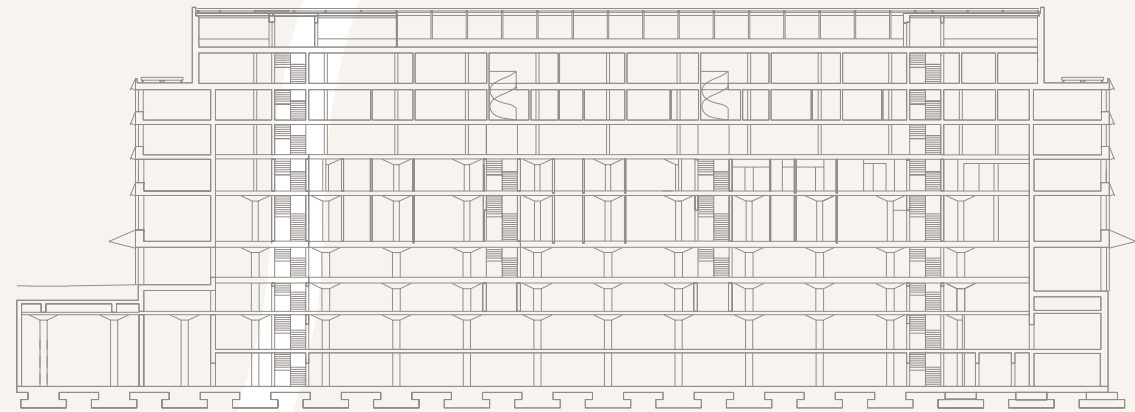


Images: Philip Heckhausen, Paola Corsini, Michael Fritschi, Raphael Schicker, Weinlager Residential Conversion, Switzerland

Project	Weinlager Residential Conversion
Location	Switzerland
Architects	Esch Sintzel Architekten
Year of Completion	2023
Budget	42,0 M€ (approx.)
Type of Procurement	Restricted competition
Project Type	Residential building—Housing bloc; Adaptive reuse of a historical building
Surface Area	12.600 m ²
Sustainability Labels	Minergie-P-Eco
Website	studiosintzel.ch/projekt/weinlager-basel

Awards

01	Swiss Architecture Year Book, 2025/26—Nomination
02	Detail Award, 2024—Winner
03	Bautenprämierung Heimatschutz Basel, 2024—Audience Award
04	Die Schweizer Architekturpreise, 2024—Special Mention «Der beste Umbau»
05	European Collective Housing Award, 2—Winner (Renovation Category)
06	Prix SIA, 2024—Jury Award & Audience Award
07	Archithese, 2024—«Swiss Performance 2024»



Davos Baukultur Quality System

Governance The project was developed by the non-profit Stiftung Habitat with the aim of creating affordable and diverse housing within a former industrial building. Collaboration with local authorities and stakeholders supported the transformation of the site within the emerging Lysbüchel Süd district.

Functionality The project creates adaptable apartments within the preserved structural grid, allowing flexible layouts and future modifications. Generous daylight, natural ventilation, and shared circulation spaces support healthy living conditions and social interaction among residents.

Environment By reusing the existing warehouse structure, the project significantly reduces embodied carbon and preserves grey energy. Photovoltaic panels and a groundwater heat pump further support energy-efficient building performance.

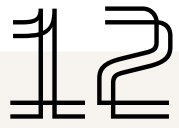
Economy The project strengthens the long-term value of the building by combining housing with communal and commercial spaces. Durable materials and adaptable layouts contribute to economic resilience and stable maintenance over time.

Diversity This project accommodates a wide range of residents through varied apartment typologies and shared facilities. Communal spaces such as the rues intérieures and roof terrace encourage social interaction and support an inclusive residential community.

Context The project preserves the industrial character of the former wine warehouse while introducing contemporary architectural elements such as balconies and façade openings. The design establishes a dialogue with the surrounding urban fabric and supports the transformation of the Lysbüchel Süd district.

Sense of Place By highlighting existing structural elements such as the mushroom columns and retaining the building's industrial identity, the project strengthens the connection between past and present. The design fosters a sense of belonging and continuity within the neighbourhood.

Beauty The project combines the expressive qualities of the historic structure with carefully integrated contemporary interventions. The resulting architecture creates a distinctive and visually compelling residential environment.



Usquare Opening the Barracks—From Military Enclave to Urban Campus

Overview

Usquare Feder is an adaptive reuse and urban regeneration project in Brussels, transforming a former military barracks site into an open, mixed-use academic neighbourhood. Developed by Université libre de Bruxelles and Vrije Universiteit Brussel, the project reimagines the once closed-off complex as an inclusive urban campus where students, researchers, and residents can meet, work, and live together. The intervention reconnects the historic site with the surrounding city through new public spaces, pedestrian links, and shared facilities.

The design carefully restores and adapts the former barracks while introducing student and researcher housing, community spaces, and academic functions. Character-

istic architectural elements of the historic buildings are preserved and integrated into a contemporary urban framework that encourages openness and interaction.

Sustainability is central to the project's strategy. Circular construction methods reuse demolition materials, while bio-based solutions such as hemp-lime walls and shell-based insulation reduce environmental impact. Shared energy systems and reused lighting further enhance efficiency. By combining heritage preservation with social inclusion and circular design, Usquare Feder demonstrates how historic sites can evolve into vibrant, sustainable urban neighbourhoods.



Images: Stijn Bollaert, Usquare, Ixelles, Brussels, Belgium

Project	Usquare Feder
Location	Ixelles, Brussels, Belgium
Architects	evr-architecten; BC architects & studies & materials; Callebaut Architecten
Year of Completion	2024
Budget	17 M€ (approx.)
Type of Procurement	Open competition
Project Type	Adaptive reuse of a historical building
Surface Area	9.035 m ²
Sustainability Labels	—
Website	www.evr-architecten.be/en/project/usquare-brussel
Awards	
01	Be.exemplary 2019



Davos Baukultur Quality System

Governance Led by Université libre de Bruxelles and Vrije Universiteit Brussel, in collaboration with Bouwmeester Maître Architecte and heritage authorities, the project involved institutional stakeholders and end-users, focusing on adaptive reuse, circular construction, and long-term site integration.

Functionality Historic halls and housing units were adapted for flexible, long-term use, supporting study, research, housing, events, and community activities while ensuring accessibility and comfort.

Environment Circularity guided the design: existing structures were reused, materials like hempcrete, lime plaster, and wood were chosen for durability, and energy-efficient systems minimise environmental impact.

Economy The transformation of a closed military site into a vibrant mixed-use neighbourhood strengthens local value, supports jobs, and ensures low-maintenance, long-lasting operation.

Diversity Mixed-uses and inclusive design foster interaction among students, researchers, locals, and visitors, supporting a socially diverse community.

Context Historic buildings and details were preserved, while new entrances reconnect the site to surrounding streets, restoring urban permeability and dialogue with the neighbourhood.

Sense of Place The project enhances local identity by opening courtyards, terraces, and communal areas, encouraging social interaction and attachment.

Beauty Restored heritage elements, natural and reclaimed materials, and abundant natural light create a coherent, distinctive, and welcoming architectural environment. The alterations to the existing structure remain visible, expressing the building's multi-layered history.



Old Glassworks Ptuj

Reconnecting the City— Industrial Ruin to Cultural Landscape

Overview

The Old Glassworks Revitalisation is an adaptive reuse and urban regeneration project in Ptuj, Slovenia, designed by ELEMENTARNA and completed in 2023. Commissioned by the City Municipality of Ptuj following an architectural competition organised with the Chamber of Architecture and Spatial Planning of Slovenia, the project transforms a degraded historic industrial site into a cultural hub that reconnects the old town with the Drava River and castle hill.

The intervention combines heritage preservation with contemporary public space design. Archaeological river pebbles are reused to pave streets and squares, while textured exposed concrete walls—formed with semicir-

cular wooden formwork—create durable surfaces that gradually acquire patina. Flexible interior halls open toward courtyards and support exhibitions, performances, and community events, complemented by modular stages and an outdoor auditorium.

The project establishes a sequence of public spaces, from the formal Vrazov trg square for cultural events to the more intimate courtyard of the Old Glassworks for everyday gatherings. Recognised with the International Piranesi Award and other international accolades, it demonstrates how careful design can revitalise historic urban fabric while strengthening civic life.

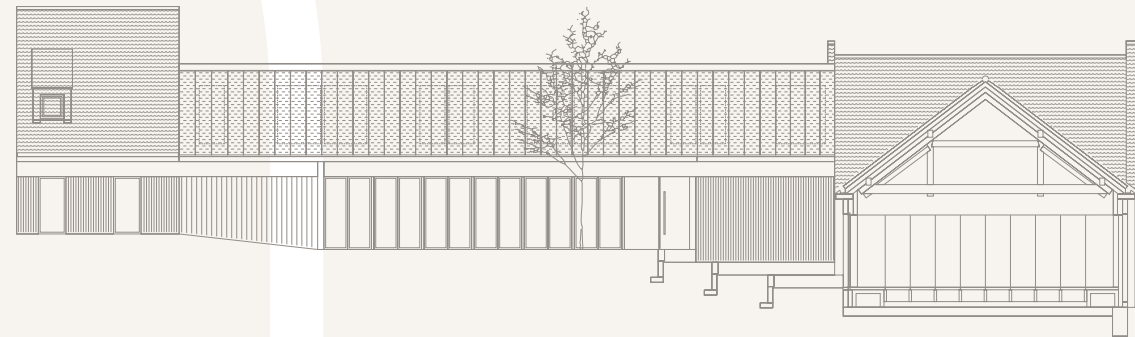


Images: Miran Kambič,
Old Glassworks Ptuj, Ptuj, Slovenia

Project	Revitalisation of Old Glassworks and surrounding urban areas in old town of Ptuj
Location	Ptuj, Slovenia
Architects	ELEMENTARNA
Landscape architect	Kolektiv Tektonika
Year of Completion	2023
Budget	4,92 M€
Type of Procurement	An open single-stage competition
Project Type	Public/Institutional building; Adaptive reuse of a historic building; Mixed-use building; Public space
Surface Area	
Building	1,361 m ²
Area	3,181 m ²
Sustainability Labels	—
Website	www.elementarna.si/projects/revitalizacija-stare-steklarske

Awards

01	International Piranesi Award, 2023—Winner
02	Plečnik Medal, 2025—Winner
03	Golden Pencil, 2024—Winner
04	Mies van der Rohe Award, 2024—Nominee
05	BAB 23 Biennale, 2023—Honourable mention
06	Salon of Architecture Novi Sad, 2024—Honourable mention



Davos Baukultur Quality System

Governance The project was initiated through a public architectural competition organised by the City Municipality of Ptuj in collaboration with the Chamber of Architecture and Spatial Planning of Slovenia. This process ensured a transparent selection and aligned the project with long-term cultural and urban development goals.

Functionality The project creates flexible spaces that support exhibitions, performances, rehearsals, and community events. Adaptable interior halls, courtyards, and modular stages allow the complex to accommodate a wide range of cultural activities.

Environment By revitalising a degraded industrial site and reusing existing materials such as archaeological river pebbles, the project reduces resource consumption and environmental impact. Durable materials and passive design strategies support long-term sustainability.

Economy The project strengthens the economic vitality of the area by establishing a cultural and tourism destination within the historic centre. Low-maintenance materials and adaptable spaces support long-term operational efficiency.

Diversity The project accommodates diverse users, including residents, artists, visitors, and cultural organisations. Its varied spaces and programming encourage inclusive participation and foster a vibrant cultural environment.

Context The project responds sensitively to the historic urban fabric of Ptuj, establishing a dialogue with the surrounding streets, castle hill, and riverfront. Carefully selected materials and clear architectural interventions reinforce the character of the historic setting.

Sense of Place By integrating archaeological materials and highlighting local textures, the project strengthens the identity and authenticity of the site. The renewed spaces reconnect the historic town with its cultural heritage and civic life.

Beauty The project combines architectural clarity with durable materials that develop a natural patina over time. Its restrained design and carefully composed public spaces contribute to a timeless and distinctive urban atmosphere.



InGrid Hub Factory to Future Workplace—Industrial Shell, Digital Culture

Overview

The InGrid Schneider Electric Hub is an adaptive reuse project in Novi Sad, Serbia, transforming a former production hall of the Novkabel factory into a carbon-neutral office and technology hub. Developed for Schneider Electric, the 17,000 m² project preserves the industrial hall's original structure while introducing contemporary workspaces designed for innovation and collaboration.

The design reinterprets the historic factory through four interior atriums that bring natural light, greenery, and flexible working environments into the deep industrial volume. Open layouts and adaptable work areas support a dynamic workplace while maintaining the character of the original structure.

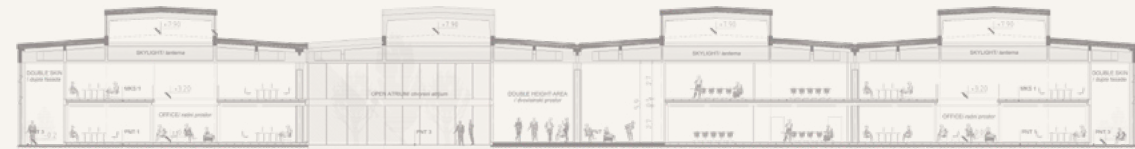
Sustainability is central to the project's concept. The building operates on renewable energy, reuses dismantled materials, and reduces indoor water consumption by 55%, achieving LEED Platinum certification. Biophilic design strategies enhance indoor comfort and wellbeing while minimising environmental impact.

By preserving the legacy of the Novkabel factory while introducing advanced sustainable technologies, the project revitalises a former industrial zone and sets the foundation for a new mixed-use technology campus, demonstrating how industrial heritage can support contemporary urban regeneration.



Images: Miloš Martinović, InGrid Hub, Novi Sad, Serbia

Project	InGrid Schneider Electric Hub
Location	Novi Sad, Serbia
Architects	Zbriskie doo, Belgrade
Year of Completion	2023
Budget	17,5 M€
Type of Procurement	Direct awarding
Project Type	Adaptive reuse of a historical building
Surface Area	17.000 m ²
Sustainability Labels	LEED Platinum
Website	zabriskie.rs/projects/novkabel-schneider-electric-hub-razvojni-centar
Awards	
01	46th Salon of Architecture, Belgrade—Grand Prix
02	24th Salon of Architecture, Novi Sad—Grand Prix



Davos Baukultur Quality System

Governance The project was enabled by a local mediator (Novaston) who developed a feasible plan, secured the site owner's support, and connected Novkabel with Schneider Electric, demonstrating a targeted, economically viable approach to adaptive reuse.

Functionality The design transforms a rigid industrial hall into a flexible, healthy workspace through four inner atriums, natural light, and ventilation, ensuring long-term adaptability and user comfort.

Environment The project exemplifies circularity by reusing all dismantled materials, minimising land use, and achieving LEED Platinum through renewable energy, low water consumption, and biophilic design.

Economy Located near the city centre and integrated into a future IT campus, the hub leverages existing infrastructure and green spaces to enhance long-term attractiveness and affordability.

Diversity The open-plan interior and permeation of nature create inclusive, mixed-use spaces that foster interaction among diverse users, reflecting Schneider Electric's progressive work culture.

Context The design respects the industrial heritage and regional identity of Novkabel, integrating green spaces and preserving the site's monumental character while revitalising the area.

Sense of Place By maintaining the factory's historical values and emphasising existing greenery, the project strengthens local identity and attachment, bridging collective memory with a sustainable future.

Beauty The architecture celebrates the raw aesthetics of industrial design—exposed girders, rhythmic facades, and open volumes—reinterpreting them to create a visually striking, atmospheric workspace.

15

Tomelloso Caves

Hidden Structures Revealed— Stabilising the Underground City

Overview

This is an emergency adaptive reuse and urban safety project in “La Esperanza” neighbourhood of Tomelloso, Spain, securing a network of post-war anthropogenic caves beneath homes and a busy avenue. Spanning over 40 meters with vaults exceeding 12 meters, the neglected underground spaces posed imminent collapse, threatening public safety. The intervention preserves the caves’ integrity while introducing structural and environmental solutions.

Hyperboloid brick piers and lightweight parabolic-arch walls reduce spans and support cracked vaults, while lime-based mortars and recycled debris restore durability. Natural ventilation and thermal stability are maintained,

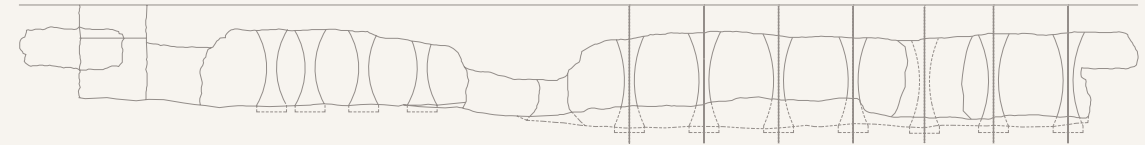
creating a low-energy, bioclimatic environment. Rooted in traditional construction methods, the project uses local materials and craftsmanship, applying circular economy principles through material reuse and low-carbon lime mortars. Beyond structural safety, it strengthens social resilience by reclaiming degraded spaces, engaging local builders, and integrating the caves into the urban fabric as a culturally and environmentally valuable asset.

By combining heritage preservation, ecological design, and community empowerment, the project demonstrates a replicable model for sustainable urban regeneration in vulnerable, low-income contexts.

Project	Stabilisation of Anthropogenic Urban Cave Systems
Location	Avenida del príncipe Alfonso, Tomelloso, Ciudad Real, Spain
Architects	Aguado + Vellés + Aperte, Escuela de Arquitectura de Toledo, UCLM University of Castilla-La Mancha. Toledo, Spain.
Year of Completion	2025
Budget	269.888,90 €
Type of Procurement	Direct-Award—Emergency Procurement
Project Type	Adaptive reuse of a historical building
Surface Area	708 m ²
Sustainability Labels	—
Website	arquitecturaviva.com/obras/estabilizacion-de-sistema-de-cuevas-antropicas-urbanas-en-tomelloso

Awards

01	CSCAE Architecture Award, 2025—Professional Practice Category
02	XIII Ibero-American Biennial of Architecture and Urbanism (BIAU)—Finalist



Davos Baukultur Quality System

Governance The project was developed through collaboration between the Tomelloso City Council and the University of Castilla-La Mancha to address the risks posed by anthropogenic caves beneath the urban fabric. Public information sessions and meetings with affected residents presented the research and proposed interventions. Technical workshops and a public exhibition further encouraged awareness and discussion about the town’s underground heritage.

Functionality The intervention stabilises a deteriorated cave system that previously posed a serious safety risk. Structural reinforcement using breathable and reversible materials transforms the space into a safe and usable environment while preserving its natural thermal stability. The restored cave can accommodate potential educational, cultural, or community uses.

Environment The project rehabilitates an existing underground structure using traditional local materials such as brick and lime-based concrete. Aggregates extracted from the cave itself are reused in the construction process, reducing transport and industrial inputs. The use of lime supports low-impact construction and long-term material compatibility.

Economy By preventing the collapse of underground cavities beneath a major urban street, the intervention avoids significant future infrastructure and safety costs. The use of traditional techniques and locally available materials provides a cost-effective and replicable model for similar situations while supporting local craftsmanship.

Diversity Situated in a vulnerable neighbourhood, the project introduces opportunities for new activities and community engagement. The flexible underground space can support educational visits, cultural initiatives, or technical training, encouraging a broader range of users and contributing to neighbourhood revitalisation.

Context The design draws on Tomelloso’s tradition of underground wine cellars and brick construction. These local typologies are reinterpreted at a larger scale through masonry structures, filled with lime-based concrete, establishing continuity with the town’s architectural and geological context.

Sense of Place The intervention highlights the cultural significance of Tomelloso’s anthropogenic caves, shaped by generations of local labor. By stabilising and revealing this hidden infrastructure, the project reconnects the community with an important element of its history and reinforces local identity.

Beauty The restored cave creates a distinctive spatial atmosphere defined by parabolic arches and hyperboloid brick piers. The rhythm of masonry, lime-washed surfaces, and subtle light conditions transform the underground space into a calm and expressive architectural environment.



Images: Javier Longobardo, Avenida del príncipe Alfonso, Tomelloso, Ciudad Real, Spain



Galenicum HQ Working Within the Factory—Circular Space in Industrial Heritage

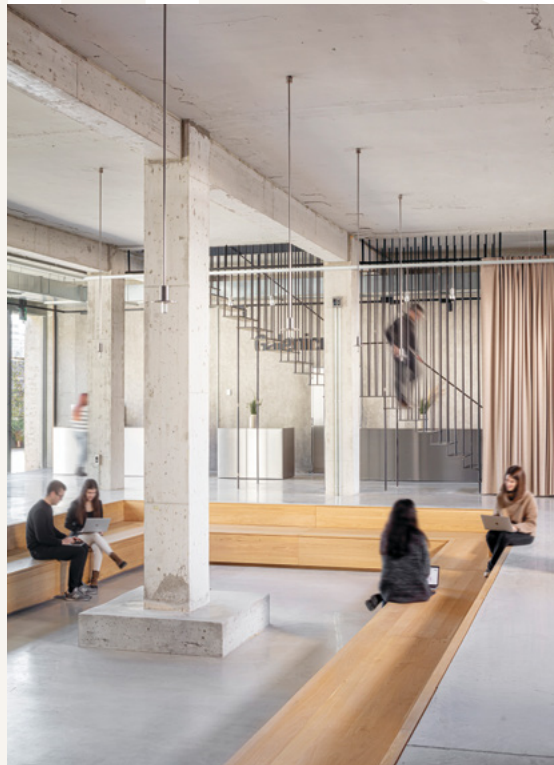
Overview

The Galenicum New Headquarters 1822 is an adaptive reuse project in Esplugues de Llobregat, Barcelona, designed by HARQUITECTES and completed in 2022. The project transforms a former industrial complex—comprising a large diaphanous pavilion with pillars and lattice trusses under a north-facing sawtooth roof, an adjacent office block, and a central courtyard—into contemporary headquarters offices for a pharmaceutical company, accommodating approximately 140 employees across various departments.

The design preserves the expansive, open character and structural integrity of the original factory while introducing a series of circular “cloisters” or rings constructed from CLT (cross-laminated timber) panels. These rings organise the workforce into synergistic departmental “tribes”

clustered around vegetated, unprogrammed central voids, with transparent inner facades opening toward the greenery for visual and spatial connectivity, and opaque outer sides housing workspaces, services, and technical passages that discreetly integrate infrastructure such as ducts, bathrooms, and stairs.

The original industrial envelope receives enhanced insulation and tempering measures, establishing a climatic gradient supported by pre-treated air renewal, natural ventilation, and radiant systems. The central courtyard evolves into a lush, leafy garden serving as a welcoming hub for access, relaxation, informal encounters, and flexible open zones dedicated to leisure, presentations, and training.

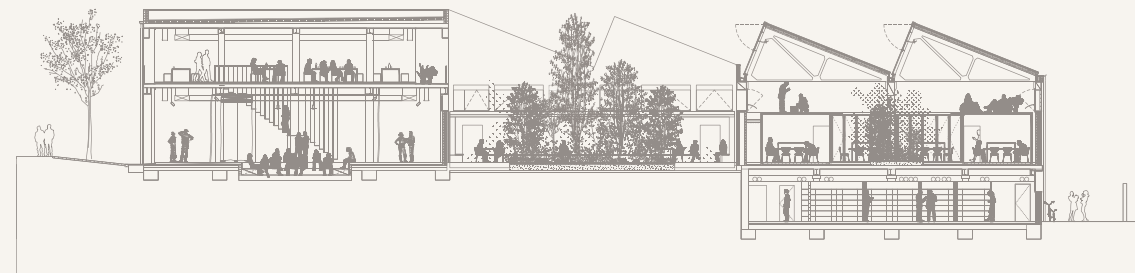


Images: Adrià Goula, Galenicum HQ, Barcelona, Spain

Project	Galenicum
Location	Carrer de Sant Gabriel, 50, 08950 Esplugues de Llobregat, Barcelona, Spain
Architects	HARQUITECTES
Year of Completion	2022
Budget	Confidential
Type of Procurement	Architecture design competition
Project Type	Office building; Adaptive reuse of a historical building
Surface Area	4.102 m ²
Sustainability Labels	LEED
Website	www.harquitectes.com/en/proyectos/galenicum-1822

Awards

01	Egurtek Prize, 2024—Premio Especial Madera Local
02	Mapei a l'edificació sostenible, 2023—2nd Prize
03	CSCAE Architecture Award, 2023—Rehabilitation Prize and Architecture Prize
04	Architectural Heritage Intervention (AHI) European Award, 6th Edition, 2023—Shortlisted
05	XVI BEAU Biennial of Spanish Architecture and Urbanism, 2023—Shortlisted



Davos Baukultur Quality System

Governance The project forms part of the ongoing transformation of an industrial sector near Barcelona and was shaped through participatory urban and programmatic processes, including employee working groups and collaborative sessions with the architects to define spatial and functional decisions. Though privately commissioned, it contributes to the strategic evolution of the area into a more integrated urban environment.

Functionality The conversion of the former factory into organised office spaces creates adaptable, long-term comfortable workplaces that respect the constraints and generous scale of the historic structure. The circular rings and box-in-box climate approach deliver contemporary ergonomic standards alongside acoustic and thermal enhancements.

Environment By reusing the existing concrete structure and sawtooth roof, the project significantly reduces demolition waste and preserves embodied energy, avoiding maximum new construction. It incorporates durable CLT elements, extensive interior vegetation for biodiversity, and passive tempering strategies—combined with natural ventilation and low-energy radiant systems—to minimise operational energy demands.

Economy The strategic location of the site, paired with low-maintenance design and durable interventions, promotes long-term economic value and resilience. The revitalised headquarters supports the company's operational efficiency while enhancing the broader area's attractiveness.

Diversity The project accommodates a range of users and activities, from focused departmental work to leisure, training, informal meetings, and communal gatherings. Public-facing garden spaces and flexible zones foster vibrant internal communities and social interaction throughout the workday.

Context The design responds sensitively to its setting within a transforming industrial zone, preserving the heritage geometry, materiality, and generous spatial qualities of the former factory. It opens private outdoor greenery toward the neighbourhood, strengthening connections to the surrounding urban fabric.

Sense of Place By retaining the distinctive industrial pavilion and sawtooth roof while introducing unique circular cloisters and a verdant central garden, the project preserves a recognisable landmark that reflects the site's manufacturing history. The transformation reinforces local identity and cultivates employee attachment through participatory involvement and distinctive, human-scaled atmospheres.

Beauty The project combines the raw, sculptural character of the old industrial elements with carefully integrated contemporary timber interventions and lush vegetated voids. The resulting composition creates visually compelling, human-centred workspaces and serene garden-like interiors that elevate the everyday experience within a revitalised architectural heritage.



Kinsale Library From Ruin to Knowledge—A *Burnt Mill* Reborn as Public Library

Overview

The Kinsale Library (James O’Neill Memorial Building / Old Mill) is an adaptive reuse project in Kinsale, County Cork, Ireland, designed by the Cork County Council Architects Department and completed in recent years (opened 2023). The project transforms a protected 19th-century grain store—severely damaged by fire, losing its roof and floors, and later stabilised as an occasional exhibition space—into a modern public library and cultural hub for the community.

Located in the heart of Kinsale’s Archaeological Zone and Church Square, the design doubles the building’s floor area while preserving its open, democratic volume and historic masonry shell. A new timber ossature replaces the lost roof, introducing three split levels anchored to an existing concrete ring beam; this mass timber structure (CLT floors, glulam elements, plywood) integrates shelving,

a dramatic triple-height void, and a polished concrete plinth. A discreet brick extension houses an office, plant room, and universal access, linking sensitively to a neighbouring elderly community facility. The original stone walls were restored with lime mortar and cork-lined plaster for enhanced thermal comfort and acoustics.

New additions achieve NZEB (Nearly Zero Energy Building) standards, minimising excavations in the sensitive archaeological context, reducing structural load on the heritage fabric, and using mass timber as a zero-carbon alternative to steel or concrete—acting as a long-term CO2 reservoir. Through this careful intervention, the project revitalises a derelict landmark into an inclusive, vibrant public space that bridges industrial heritage with contemporary civic life.



Images: Jed Nieszgodá, Kinsale Library, Kinsale, Co. Cork, Ireland

Project	Kinsale Library
Location	Kinsale, Co. Cork, Ireland
Architects	Architects Department, Cork County Council
Year of Completion	2023
Budget	€ 3,7 M€
Type of Procurement	Direct Award—In-House Architects Department
Project Type	Adaptive reuse of a historical building
Surface Area	674 m ²
Sustainability Labels	—
Website	www.youtube.com/watch?v=haf8W6rjK50

Awards	
01	RIAI Award, 2024—Winner, Conservation, Adaptation and reuse
02	Wood Awards Ireland, 2024—Winner, Overall
03	Wood Awards Ireland, 2024—Winner, Restoration, Conservation and Reuse



Davos Baukultur Quality System

Governance Kinsale Library’s development was led by Cork County Council’s Architects Department, with transparent public funding and community engagement, ensuring a participatory process supported by national and EU regeneration funds.

Functionality The adaptive reuse of the Old Mill introduces a flexible, split-level library and exhibition space, designed for long-term adaptability, user comfort, and accessibility, with natural light and timber construction enhancing the environment.

Environment The project exemplifies circularity by reusing the existing stone shell, incorporating sustainable timber, and minimising waste, while the building’s energy-efficient design aligns with principles of durability and responsible resource use.

Economy Located in Kinsale’s town centre, the library leverages existing infrastructure and public investment to create a vibrant, long-term community asset, boosting local cultural and economic vitality.

Diversity The library serves as a multifunctional hub for reading, exhibitions, and public events, fostering inclusivity and interaction among diverse age groups and community members.

Context The design respects Kinsale’s medieval urban fabric and the building’s protected status, blending contemporary timber architecture with the historic stone structure, and enhancing the town’s architectural heritage.

Sense of Place By restoring a landmark building and preserving its historical character, the project strengthens local identity and community attachment, making the library a focal point for civic pride and collective memory.

Beauty The bold insertion of a timber ossature, the dramatic landscape window, and the interplay of old and new materials create a visually striking, award-winning space that celebrates both heritage and modern design.



Kunstsilo Monumental Void—A Silo Becomes a Cultural Cathedral

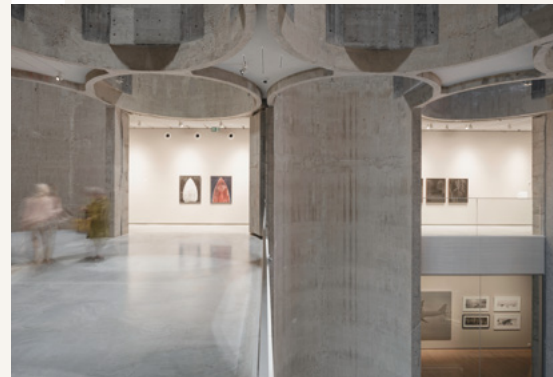
Overview

Kunstsilo is an adaptive reuse project in Kristiansand, Norway, transforming a historic grain elevator on Odderøya into a contemporary art museum and cultural hub. Originally built between 1935 and 1956, the concrete silo complex has been carefully restored and extended, preserving its functionalist character while introducing new architectural elements that support public and cultural use.

At the heart of the project is the 21-metre-high Silo Hall, a dramatic interior plaza that connects exhibition galleries, cafés, a shop, and cultural venues while linking the museum to the harbour and surrounding city. Glass openings and perforations create visual connections between interior

spaces, the sea, and nearby institutions such as the Kilden Performing Arts Centre. Exhibition floors wrap around the cylindrical silos, combining flexible gallery spaces with the expressive industrial structure, while the rooftop offers outdoor sculpture areas and panoramic views.

Sustainability is central to the design, with around 7,000 tons of original concrete retained and demolition materials recycled. Energy-efficient systems and durable materials support long-term performance, demonstrating how industrial heritage can be transformed into an inclusive cultural landmark.

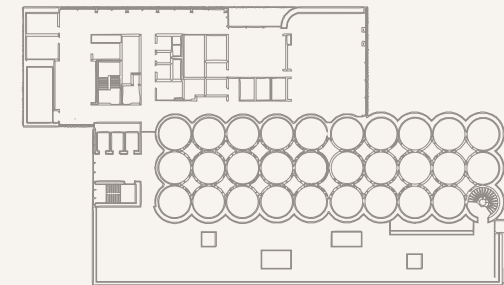


Images: Pedro Pegenaute, Allan Williams, Kunstsilo, Kristiansand, Norway

Project	Kunstsilo
Location	Kristiansand, Norway
Architects	Mestres Wåge Arquitectes, BAX Studio, Mendoza Partida Architectural Studio
Year of Completion	2024
Budget	60 M€ (approx.)
Type of Procurement	International Architecture competition
Project Type	Public space
Surface Area	10,300 m ²
Sustainability Labels	—
Website	www.youtube.com/watch?v=haf8W6rjK50

Awards

01	Betongtavlen (Concrete Building Award, Norway), 2024—Winner
02	Årets Bygg (Building of the Year, Norway), 2024—Winner
03	ADF Design Award, 2024—Winner
04	Outsider Award, 2024—Winner
05	AHI Award, 2024—Finalist
06	Prix Versailles, 2024—Nominated (Not Decided Yet)
07	Kristiansand Kommune Byggeskikkpris (Municipal Prize of Architecture, Kristiansand), 2024—Winner



Davos Baukultur Quality System

Governance Kunstsilo was developed through an open international competition, generating national and local debate on public investment in cultural infrastructure. The process included close collaboration with museum leadership, advisory groups of artists, architects, and neighbours, and inclusive dialogue with the Council for People with Disabilities to ensure accessible and high-quality design solutions.

Functionality The project converts a historic grain silo into a contemporary art museum with flexible exhibition spaces, workshops, event areas, rooftop terraces, and public amenities. The transformation preserves the silo's industrial character while providing healthy, well-lit, acoustically and climatically comfortable interiors.

Environment Situated on a brownfield site, Kunstsilo reuses the existing structure, retaining 7,000 tons of concrete and recycling all demolition waste. Durable construction materials—including concrete, steel, and aluminum—ensure low maintenance, long-term usability, and minimal environmental impact.

Economy Durable materials, efficient use of space, and proximity to the city centre and other cultural institutions strengthen long-term economic viability. Accessibility via public transport further enhances the site's urban and tourism value.

Diversity Kunstsilo is an inclusive cultural hub open to all ages and backgrounds. It functions as a public arena for art, social exchange, and education, attracting residents, tourists, and school groups alike.

Context The building engages with its surroundings through multiple entrances, rooftop terraces, and outdoor urban spaces, fostering connection with neighbouring institutions and the waterfront. Varied microclimates support flexible programming and public interaction.

Sense of Place Kunstsilo has become a key destination in Kristiansand, anchoring the cultural quarter and strengthening local identity. Its Silo Hall and public spaces promote social interaction and community attachment.

Beauty The project preserves and celebrates the expressive industrial heritage of the silo while introducing striking interior and exterior interventions. The Silo Hall serves as a central "basilica" of the city, widely praised in national and international media and recognised with architectural awards.



Handelszentrum 16

Reprogramming the Mega-structure—Warehouse to Mixed-Use Ecosystem

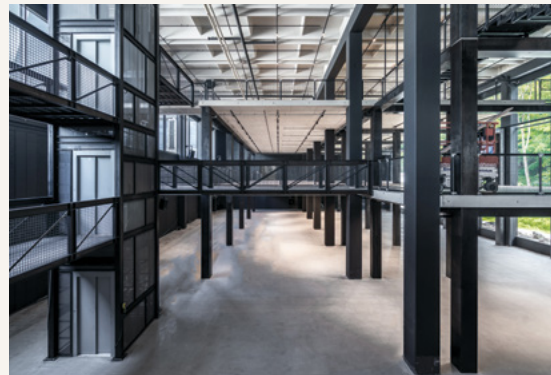
Overview

Handelszentrum 16 is an adaptive reuse project in Bergheim near Salzburg, Austria, designed by smartvoll architects and ongoing since 2021. The project transforms a disused 1970s–1980s mail-order warehouse complex into a 61,000 m² mixed-use commercial hub with offices, production spaces, gastronomy, and public areas.

Commissioned privately by Marco Sillaber, the redevelopment reactivates a 30,000 m² concrete structure that had stood abandoned, avoiding demolition while introducing new economic and social activity. The design turns structural challenges such as deep floorplates and limited daylight into opportunities. Flexible platforms and atriums bring natural light into the interior and encourage

vertical interaction, while distinct hall identities break down the large industrial volumes into more human-scaled environments. Sustainability is central to the strategy, with the reuse of approximately 25,500 m³ of existing concrete significantly reducing embodied carbon and construction waste.

Circular principles guide material use and refurbishment, demonstrating how large industrial buildings can be repurposed rather than replaced. Recognised with the Erdreichpreis 2022 and the Architekturpreis Land Salzburg 2024, the project exemplifies sustainable brownfield regeneration.

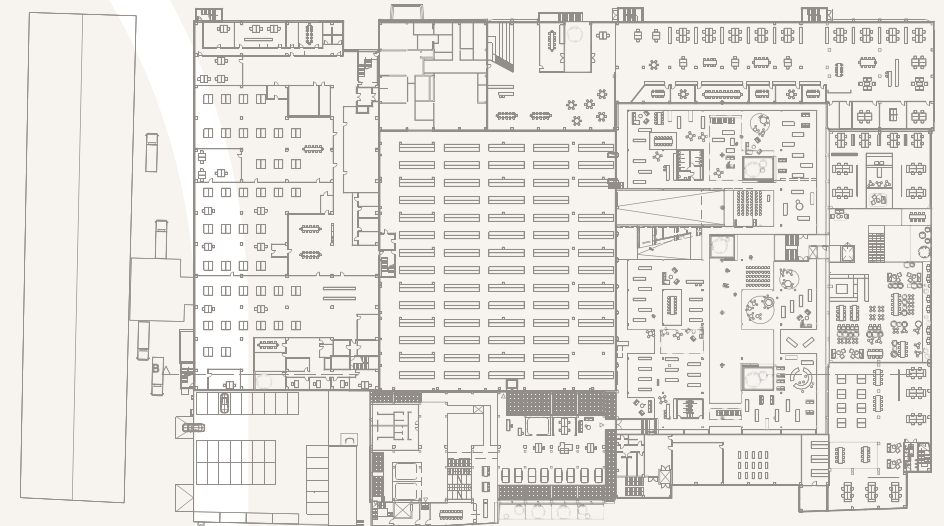


Images: Smartvoll, Handelszentrum 16, Salzburg, Austria

Project	Handelszentrum 16
Location	Handelszentrum 16, 5101 Bergheim bei Salzburg, Austria
Architects	smartvoll
Year of Completion	2021–ongoing
Budget	50 M€ (approx.) including land
Type of Procurement	Private
Project Type	Commercial building; Office building; Adaptive reuse of a historical building; Mixed-use building
Surface Area	61.000 m ²
Sustainability Labels	—
Website	www.smartvoll.com/projekte/handelszentrum-16

Awards

01	Erdreichpreis, 2022—Winner
02	Architekturpreis Land Salzburg, 2024—Winner
03	Brownfield Award, 2024—Winner



Davos Baukultur Quality System

Governance The project was developed through close collaboration between the private client, architects, and local stakeholders to guide the transformation of the former warehouse complex. This process supported a long-term strategy for reusing an abandoned industrial structure within the region.

Functionality The project creates adaptable spaces for offices, production, gastronomy, and public activities within the existing structure. Flexible platforms, atriums, and subdivided halls provide natural light, improve circulation, and enable a wide range of uses.

Environment By reusing the existing concrete structure and sealed brownfield site, the project significantly reduces demolition waste and embodied carbon. Circular design strategies and durable materials further support resource-efficient building practices.

Economy The project strengthens the long-term value of the site by transforming an abandoned warehouse into a mixed-use commercial hub. Durable materials and adaptable spaces contribute to economic resilience and stable maintenance over time.

Diversity This project accommodates a wide range of tenants and activities, including workplaces, production spaces, and social amenities. This mix of uses encourages interaction among diverse users and supports a dynamic working environment.

Context The project responds to its industrial surroundings and landscape setting near the urban edge of Salzburg. Subtle architectural interventions preserve the character of the original warehouse while integrating the complex into its wider environment.

Sense of Place By revealing the qualities of the existing structure and introducing shared spaces, the project creates a renewed identity for the former warehouse complex. The transformation strengthens connections between users and the site's industrial heritage.

Beauty The project combines the robust material character of the original structure with carefully designed spatial interventions. Natural light, generous volumes, and exposed materials create a distinctive and atmospheric architectural environment.

20

Hagenhaus Rural Heritage Reactivated—*Farmstead* to *Cultural Campus*

Overview

Hagenhaus is an adaptive reuse project in Nendeln, Liechtenstein, transforming a historic 1837 farmstead into a cultural and educational centre for the International Music Academy Liechtenstein. The neo-classical ensemble—comprising a residential house, stable, wash house, and shooting lodge—has been carefully restored while introducing contemporary elements that support teaching, rehearsal, and community activities.

The intervention preserves the architectural identity of the historic buildings while adding a new courtyard structure that acts as a social hub for students, professors, and visitors. The arrangement creates a cohesive campus where learning, performance, and everyday interaction can take place within a restored rural heritage setting.

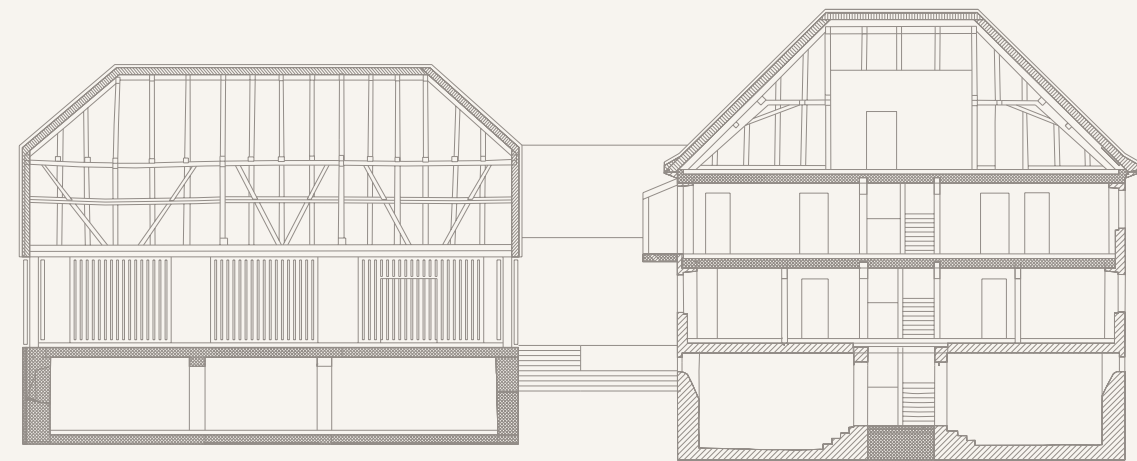
Sustainability guided the project’s material and technical strategies. Natural materials such as wood, stone, and lime plaster were used wherever possible, while energy-efficient systems—including heat pumps and geothermal probes—support low-impact operation. Public gardens, accessible pathways, and open gathering spaces strengthen the connection between the academy and the local community. Recognised with awards such as best architects 26 and the ICONIC AWARDS 2025, Hagenhaus demonstrates how heritage preservation can create a vibrant cultural destination.



Images: Adolf Bereuter and Dominic Kummer for Cukrowicz Nachbaur Architekten, Hagenhaus, Nendeln, Liechtenstein

Project	Hagenhaus
Location	Nendeln, Liechtenstein
Architects	Cukrowicz Nachbaur Architekten
Year of Completion	2024
Budget	17,5 M€
Type of Procurement	Direct Award
Project Type	Adaptive reuse of a public space
Surface Area	1,540 m ²
Sustainability Labels	—
Website	www.cn-architekten.at/projekt/hagen-haus-nendeln

Awards	
01	Best Architects 2026—Award
02	ICONIC AWARDS, 2025—Best of Best



Davos Baukultur Quality System

Governance The project involved ongoing public engagement—from a 2013 press article and 2015 documentary sparking interest to open days, European Heritage Day 2023 site visits, and continuous updates via press releases, ensuring transparency and inclusive participation.

Functionality Hagenhaus combines adaptive heritage preservation with modern needs: natural materials (wood, lime plaster, stone), adjustable slat filters for acoustics/light, and passive house standards in the new courtyard building ensure long-term comfort and versatility for cultural and educational uses.

Environment The project exemplifies the “5Rs”: existing structures, doors, windows, and even historic wall paintings were reused or restored; natural materials and energy-efficient systems (heat pumps, geothermal probes) minimise waste and reduce grey energy.

Economy The revitalised ensemble boosts long-term local value—its proximity to public transport, low-maintenance traditional materials, and diverse cultural programming (concerts, lectures) make it a sustainable asset for Nendeln and the broader region.

Diversity The site fosters inclusive, mixed-use vibrancy: music academy classrooms, student housing, public concerts, communal dining, and rentable event spaces create year-round interaction among international students, locals, and visitors of all ages and backgrounds.

Context The design harmonises with its landscape, using local sandstone, traditional dry stone walls, and rural garden themes to blend the ensemble into the orchard meadows and alpine views, while the new courtyard building’s scale and materials respect historic proportions.

Sense of Place Through authentic restoration, the project reignited community pride—transforming a neglected site into a beloved cultural landmark, where historic charm and modern functionality deepen locals’ emotional connection and identity.

Beauty Hagenhaus is celebrated for its atmospheric, soulful aesthetic: the interplay of preserved heritage and contemporary elegance, combined with scenic gardens and light-filled spaces, creates a universally admired sense of harmony and inspiration.



Hyparschale Magdeburg

Shell Structure Reclaimed— *From Modernist Experiment to Civic Stage*

Overview

Hyparschale is the restoration and adaptive reuse of an iconic shell structure in Magdeburg, Germany, originally built in 1969 by structural engineer Ulrich Müther. Listed as a historic monument since 1998, the building stood vacant and severely deteriorated for more than two decades before its comprehensive renovation between 2019 and 2024 by gmp · von Gerkan, Marg and Partners Architects. Commissioned by the City of Magdeburg, the project preserves and reactivates the building's striking hyperbolic paraboloid roof while introducing a contemporary cultural program. The restoration strengthened the thin concrete shell using innovative carbon concrete technology, allowing structural reinforcement with sig-

nificantly reduced material use. Reopened rooflights and a new transparent façade enhance daylight, insulation, and spatial quality. Inside, freestanding cubic structures subdivide the large hall into flexible exhibition and event spaces while maintaining a generous central volume that highlights the sculptural roof. Designed for long-term adaptability, these modular elements can be reconfigured as needs evolve.

Today, Hyparschale functions as a multifunctional venue, demonstrating how post-war modernist architecture can be sustainably preserved and renewed.

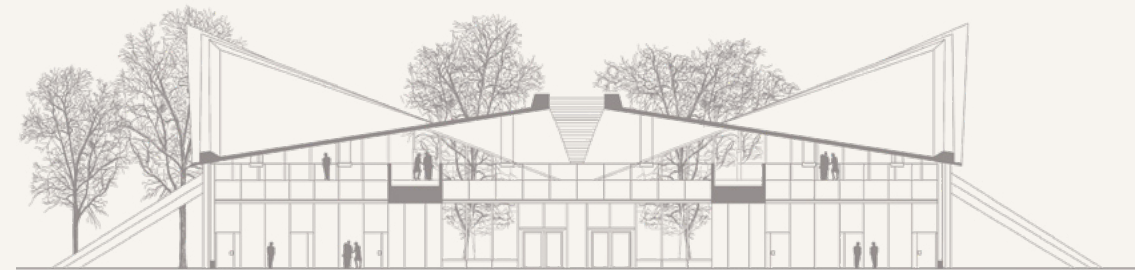


Images: Marcus Bredt, Hyparschale Magdeburg, Magdeburg Germany

Project	Hyparschale Magdeburg
Location	Hyparschale Magdeburg, Germany
Architects	gmp Architects von Gerkan, Marg and Partner
Year of Completion	2024
Budget	24,8 M€ (approx.)
Type of Procurement	Restricted competition
Project Type	Adaptive reuse of a historical building; Mixed-use building; Multifunctional venue for events and exhibitions
Surface Area	3.948 m ²
Sustainability Labels	—
Website	www.gmp.de/en/hyparschale

Awards

01	Neumann Preis, 2025—Recognition
02	db Respekt und Perspektive Bauen im Bestand Preis, 2024—Recognition
03	Architizer A+ Award, 2025—Finalist, Sustainable Adaptive Reuse or Renovation Project
04	AHI Preis Architectural Heritage Intervention, 2025—Shortlist



Davos Baukultur Quality System

Governance After decades of vacancy, the City of Magdeburg secured the monument through a public architectural competition in 2017. The winning design by gmp · von Gerkan, Marg and Partners Architects was implemented in transparent, phased construction (2019–2024), aligning modernisation with conservation standards.

Functionality The restored hall is now a flexible conference and event venue. Four cubic insertions structure the interior while preserving the monumental central space beneath Ulrich Müther's iconic shell roof, enabling adaptable use for exhibitions, congresses, and cultural events.

Environment The original 7 cm shell was strengthened using innovative carbon concrete, achieving major material savings and extending structural life. Efficient building systems and a high-performance glass façade improve energy efficiency, daylight, and comfort while minimising maintenance needs.

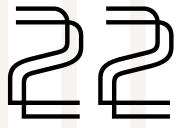
Economy As part of Magdeburg's expanding event campus, the Hyparschale strengthens the city's MICE profile, attracting national conferences and visitors. Durable construction and long-life materials secure lasting economic value.

Diversity Operated as an inclusive congress and exhibition center, the venue serves businesses, associations, and cultural groups under sustainable management principles.

Context Located in Rotehorn Park, the renewed transparency and reopened skylights enhance dialogue between the sculptural roof and the surrounding landscape, respecting and clarifying Müther's original vision.

Sense of Place A landmark of post-war engineering and a cherished memory for citizens, Hyparschale regains its role as a civic icon. By preserving the original shell roof and structural form, the project maintains a strong visual and cultural connection with Magdeburg's architectural heritage.

Beauty The restored double-curved shell stands as a luminous, sculptural presence, combining technical ingenuity with visual elegance.



Wangen River and City Reconnected—*From Industrial Ground to Living Landscape*

Overview

Neue Stadt—Landschaft entlang der Argen is a large-scale urban and landscape regeneration project in Wangen im Allgäu, Germany, designed by lohrer.hochrein landschaftsarchitekten und stadtplaner gmbh and completed for the Landesgartenschau 2024. The project transforms a 25-hectare former ERBA cotton mill site into a vibrant mixed-use district that reconnects the historic town with the Argen River. Emerging from a 2014 urban-landscape competition, the intervention revitalises the former industrial area through the adaptive reuse of historic mill buildings for housing, offices, cultural spaces, and events. At the same time, the Argen riverbanks are renaturalised with softened edges and new floodplains, while new

squares, parks, and pedestrian routes create continuous public spaces linking the site to the old town.

Ecological strategies shape the design, including biodiversity habitats, permeable surfaces, and more than 3,000 new plantings. Material recycling, on-site soil reuse, and climate-resilient planning further support sustainable urban development. Awarded the CITY'SCAPE Award 2025 and a Merit Award / Honourable Mention for the Deutscher Städtebaupreis, the project demonstrates how former industrial landscapes can become lively, environmentally resilient urban quarters.



Images: Thorsten Jochim, Wangen, Wangen im Allgäu, Germany

Project	Wangen, Landesgartenschau 2024 Neue Stadt—Landschaft entlang der Argen
Location	Wangen im Allgäu, Germany
Architects	lohrer.hochrein landschaftsarchitekten and stadtplaner gmbh
Year of Completion	2024
Budget	25 M€ (approx.)
Type of Procurement	Open competition
Project Type	Residential building—Social housing/housing bloc; Commercial building; Industrial building; Adaptive reuse of a historical building; Mixed-use building; Public space
Surface Area	~ 25 ha—industrial site including housing project ~ 45 ha—landscape exhibition whole area
Sustainability Labels	—
Website	lgswangen2024.de/gartenschau/stadtentwicklung/neues-kapitel-des-erba-areals www.lohrer-hochrein.de

Awards

01	CITY'SCAPE Award, 2025—1st Prize
02	Flächenrecyclingpreis, 2025—1st Prize
03	Deutscher Städtebaupreis, 2025—Merit Award/Honourable Mention
04	Deutscher Landschaftsarchitekturpreis, 2025—Nomination
05	Bundespreis Stadtgrün, 2024—Nomination
06	Polis Award, 2025—2nd Prize



Davos Baukultur Quality System

Governance The project was developed through a public planning process that included site walks, consultations, and discussions with local stakeholders. This participatory approach supported transparent decision-making and aligned the project with long-term urban and landscape development goals.

Functionality The project creates flexible public spaces, cultural facilities, and residential areas that support a wide range of everyday and recreational activities. Improved access to the river landscape and carefully designed open spaces promote health, leisure, and community use.

Environment By revitalising a former industrial site and renaturalising the Argen River, the project restores ecological habitats and improves environmental performance. Reused materials, permeable surfaces, and extensive new plantings support biodiversity and climate resilience.

Economy The project strengthens the long-term value of the area by transforming a derelict industrial site into a vibrant mixed-use district. Durable landscape elements and adaptable spaces contribute to sustainable maintenance and ongoing urban vitality.

Diversity The project accommodates a variety of users through mixed housing, cultural facilities, and public spaces. This combination encourages interaction among residents, visitors, and local communities of different ages and backgrounds.

Context The project reconnects the former industrial site with the historic town of Wangen and the surrounding river landscape. Carefully integrated materials, scales, and spatial sequences establish a dialogue between the urban fabric and natural environment.

Sense of Place By combining the site's industrial heritage with new public landscapes and river access, the project strengthens local identity and collective memory. The renewed area fosters a sense of belonging and reconnects residents with the Argen River.

Beauty The project creates a visually compelling landscape through carefully designed public spaces, natural materials, and river views. The combination of restored nature and contemporary design contributes to a distinctive and memorable urban environment.



Aalen Cultural Station

After the Fire—From Railway Infrastructure to Cultural Hub

Overview

The Aalen Cultural Station is a groundbreaking project by a+r Architekten that revitalises a historic railway site into a thriving cultural center. Following a devastating fire in 2014, the design preserved the site’s original sandstone façades and iconic roof forms, integrating them with contemporary materials like fair-faced concrete and perforated metal. This thoughtful fusion creates a striking balance between the city’s industrial heritage and modern architectural innovation. Spanning 7,204 m², the center unites a cinema, theater, music school, event halls, and dining spaces, serving as a dynamic hub for arts, education, and

community gatherings. Its modular “box” system ensures long-term flexibility, accommodating evolving cultural needs while maintaining structural integrity. The project is a sustainability leader, reusing existing structures to reduce waste and employing durable, low-maintenance materials for longevity.

What makes Kulturbahnhof Aalen truly remarkable is its transformative impact on the city. By repurposing a brownfield site, it enhances Aalen’s cultural landscape, fostering inclusivity and creativity.

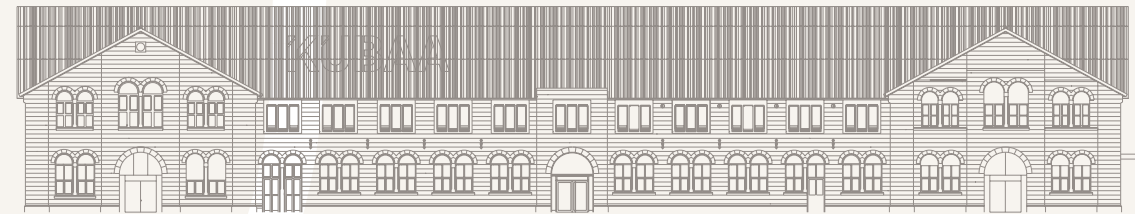


Images: Brigida González, Kulturbahnhof Aalen, Aalen, Germany

Project	Kulturbahnhof Aalen
Location	Aalen, Germany
Architects	a+r Architekten
Year of Completion	2020
Budget	26,6 M€ (approx.)
Type of Procurement	Architecture Design Competition
Project Type	Public building
Surface Area	7.204,95 m ²
Sustainability Labels	—
Website	aplusrEnvironment.de/en/projects/kulturbahnhof-aalen

Awards

01	Hugo-Häring State Prize, 2024—Recognition
02	Staatspreis Baukultur Baden-Württemberg, 2024—Award Winner, Bauen für die Gemeinschaft
03	Polis Award, 2023—3rd Prize, Reaktivierte Zentren
04	Design Educates Awards, 2023—Honorable Mention
05	Hugo-Häring-Award Ostwürttemberg, 2023—Recognition
06	The Plan Award, 2023—Finalist
07	International Architecture Awards, 2023—Winner
08	Archello Awards, 2023—Jury Winner, Cultural Building of the Year
09	DAM Preis, 2023—Nomination



Davos Baukultur Quality System

Governance The project was developed through an invited architectural competition (2015), ensuring a structured and transparent selection process, though broader public participation details are not explicitly outlined.

Functionality The Kulturbahnhof’s “box” system within the preserved shell ensures long-term adaptability, supporting diverse cultural functions (cinema, theater, music school) while maintaining comfort through natural materials, acoustics, and generous, well-lit spaces.

Environment The project exemplifies circular economy principles by reusing existing structures, minimising waste, and employing durable materials (e.g., fair-faced concrete, perforated metal), while repurposing a brownfield site to avoid land consumption.

Economy By consolidating scattered cultural institutions into one central hub, the project optimises resources, reduces operational costs, and enhances Aalen’s cultural appeal, ensuring long-term value through durable, low-maintenance construction.

Diversity The center fosters social and cultural inclusion by housing mixed- uses (cinema, theater, dining) under one roof, catering to diverse age groups, interests, and abilities, and promoting interdisciplinary collaboration.

Context The design respects its urban context, blending restored sandstone façades and historic roof forms with contemporary elements (e.g., perforated metal cladding) to harmonise with Aalen’s industrial past and evolving cityscape.

Sense of Place By preserving and reinterpreting historic features (e.g., stone façades), the project strengthens local identity, fostering emotional connections and civic pride among residents.

Beauty The Kulturbahnhof’s aesthetic impact lies in its harmonious contrast between historic and modern elements—restored sandstone, contemporary volumes, and light-filled interiors—creating an inspiring, visually rich atmosphere.



Bokšto Skveras Courtyard

City Revealed—From Hospital Complex to Urban Quarter

Overview

Located in the UNESCO-protected Old Town of Vilnius, Bokšto Skveras regenerates a historic hospital complex occupying much of the 44th quarter. The ensemble of six buildings and four courtyards, developed between the 15th and 18th centuries and abandoned since 1999, has been transformed into a multifunctional urban destination. Initiated by the Ortiz brothers of Baltisches Haus, the project unfolded over 14 years, including extensive archaeological research that revealed significant cultural layers.

The design approach is grounded in careful conservation and respectful contrast. Baroque and Gothic elements—including chapel spaces, vaults, and historic structural features—were restored, while contemporary interventions

are clearly expressed in modern materials. A polished steel elevator and stair volume, also the volume of the restaurant, reflects the surrounding heritage, while a unique double-roof system allows natural light into attic offices without altering the historic roof silhouette. The complex now integrates residential and administrative uses alongside public amenities, including a restaurant, spa, and accessible courtyard spaces that reconnect the site with the surrounding city. Through sensitive restoration, discreet technical integration, and sustainable reuse strategies, Bokšto Skveras demonstrates how historic fabric can be adapted for contemporary life while preserving its cultural significance.

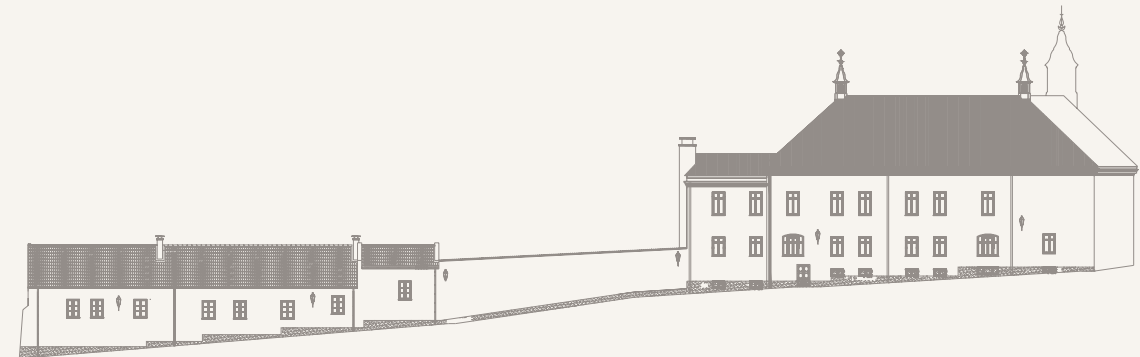


Images: Norbert Tukaj, Bokšto Skveras, Vilnius, Lithuania

Project	Bokšto Skveras
Location	Vilnius, Lithuania
Architects	ARCHINOVA & Studio Seilern Architects
Year of Completion	2022
Budget	40 M€
Type of Procurement	Direct Awarding
Project Type	Conversion of a historic building into a multifunctional complex
Surface Area	7.534,04 m ² (Plot area); 13.265 m ² (Total area)
Sustainability Labels	—
Website	bokstoskveras.lt

Awards

01	Architecture MasterPrize, 2025—Winner, Heritage Architecture
02	D&AD Awards, 2025—Winner (Yellow Pencil), Spatial Design/Refurbishment
03	Lithuanian National Architecture Awards, 2025—Winner (Grand Prix)
04	Lithuanian National Architecture Awards, 2025—Winner, Conversion
05	Architects Association of Lithuania Award “Introspection” 2022—Winner, Multifunctional/Heritage
06	BLT Built Design Awards, 2025—Winner (Honorable Mention), Architecture
07	Paris Design Awards, 2025—Winner, Architecture
08	Civic Trust Awards, 2025—Winner
09	Civic Trust Awards, 2024—Michael Middleton Special Award, Winner
10	Architizer A+Awards, 2025—Special Mention, Mixed-Use (>25,000 sq ft)
11	RIBA International Awards, 2025—Shortlist



Davos Baukultur Quality System

Governance Public and specialist discussions guided the integration of contemporary architecture into the historic complex. Cultural heritage institutions consider the project exemplary for future interventions.

Functionality The complex supports offices, residences, SPA, restaurant, and multifunctional restored chapel spaces for events. Flexible layouts and underground parking allow for long-term adaptability, while durable materials and modern systems ensure comfort, air quality, and acoustic performance.

Environment Historic structures were restored and reused, while new interventions employ durable local materials. The design allows future transformations without impacting heritage, fulfilling the “5Rs” of sustainability: refuse, reduce, repair, reuse, recycle.

Economy Located in the Old Town with excellent accessibility, the project enhances urban life and tourism. Durable materials and careful planning ensure low maintenance costs and long-term economic value.

Diversity Bokšto Skveras accommodates multiple functions, attracting residents, tourists, and various user groups. Courtyards serve public, private, and residential uses, supporting a lively, inclusive environment.

Context The ensemble reinforces Vilnius Old Town’s identity, harmonising new elements with Baroque materials, colours, and urban grain. Courtyards reinterpret historical herb gardens, and the 300-year-old linden tree is preserved as a central landscape feature.

Sense of Place The project strengthens local identity through a sensitive blend of historic and modern architecture. It is recognised as a model of high-quality private investment in heritage regeneration.

Beauty The restored Baroque ensemble, modern architectural additions, and landscaped courtyards create a visually and spatially striking environment, widely admired and awarded in architectural circles.

25

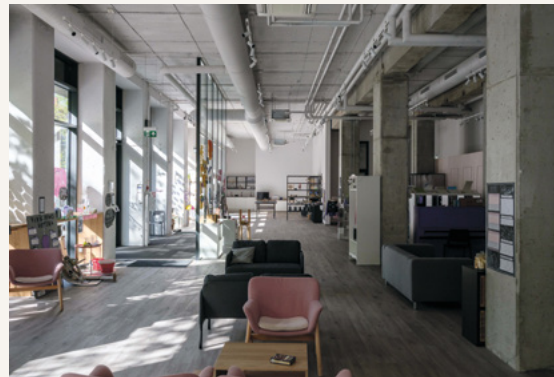
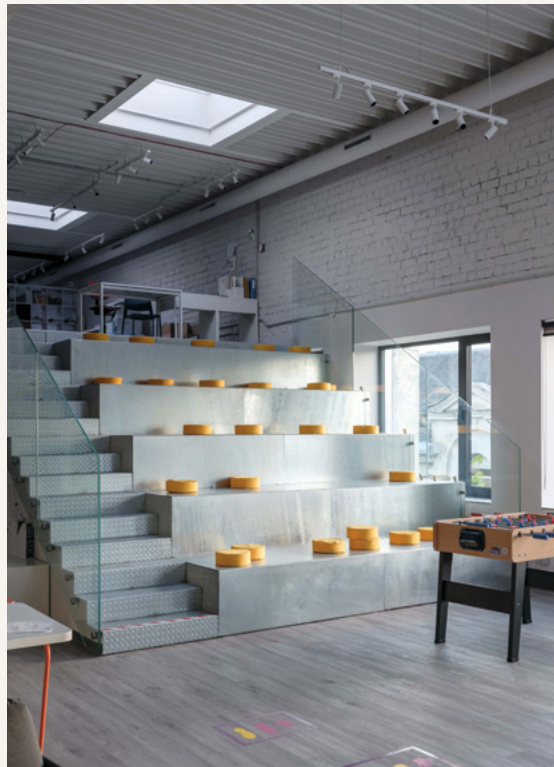
Herojus School Learning Reimagined—From Printing House to Open School

Overview

Herojus School is an adaptive reuse project in Kaunas, Lithuania, designed by Architectural Bureau G.Natkevicius & Partners and completed in 2023. The project transforms the historic “Spindulys” printing house (1928–2009)—an interwar industrial site where major publications were printed and Lithuanian coins minted—into a vibrant educational facility. The 3,009 m² design preserves the building’s original volume and raw concrete structure while introducing a galvanised steel façade that echoes zinc etching plates used in traditional printing. Interior spaces are organised around flexibility and democratic principles: there is no principal’s office or bells, and multi-functional zones include an amphitheater for lessons

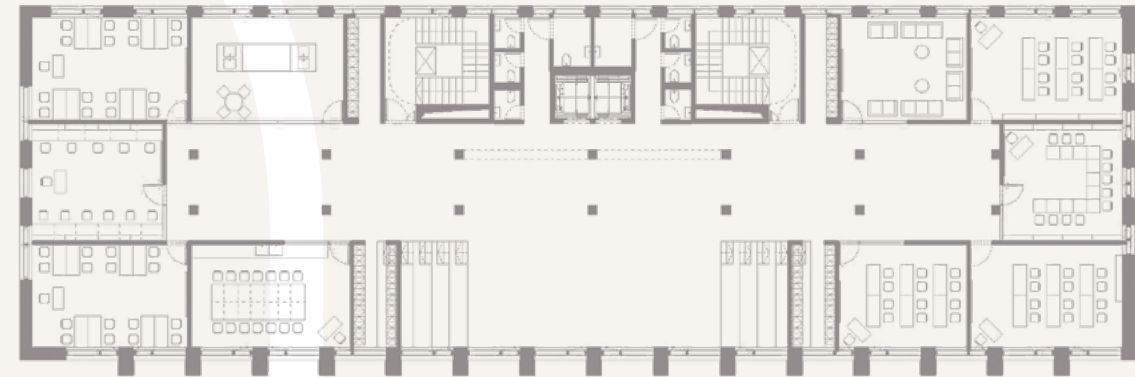
and performances, quiet study areas, creative workshops, and an open lobby for community events.

Centrally located, the ground floor engages the surrounding neighbourhood, hosting seminars, markets, and performances. Sustainability is embedded through brownfield revitalisation, embodied energy savings, and adaptable layouts to ensure long-term use. Recognised with the Architects Association of Lithuania Award “Introspection” 2024 and nominated for the EU Mies van der Rohe Award 2026, the project demonstrates how industrial heritage can support contemporary, socially engaged learning.



Images: Lukas Mykolaitis, Herojus School, Kaunas, Lithuania

Project	Herojus School
Location	Gedimino g. 10, Kaunas, 44330 Kauno m. sav., Lithuania
Architects	Architectural Bureau G.Natkevicius & Partners
Year of Completion	2023
Budget	6 M€ (approx.)
Type of Procurement	Direct Awarding
Project Type	Adaptive reuse of an industrial building
Surface Area	3.009 m ²
Sustainability Labels	—
Website	natkevicius.lt/projektas/administracinis-pastatas-gedimino
Awards	
01	Architects Association of Lithuania Award “Introspection” 2024—Winner



Davos Baukultur Quality System

Governance The project was developed through a focused, transparent process that engaged the educational client to adapt the historic industrial site for contemporary learning. Design decisions were guided by long-term educational goals while preserving the building’s heritage character.

Functionality The project creates flexible, multi-functional spaces that support lessons, workshops, performances, and community events. Natural daylight, ventilation, and adaptable layouts ensure healthy, accessible, and long-lasting educational environments.

Environment By revitalising a brownfield site and reusing the existing structure, the project conserves embodied energy and reduces carbon emissions. Circular design principles and durable materials support long-term sustainability.

Economy The project enhances the value of the centrally located site by combining educational, cultural, and community functions. Durable construction and adaptable interiors contribute to long-term operational efficiency and maintenance stability.

Diversity The project accommodates a wide range of users, including students, teachers, parents, and local community members. Its versatile spaces foster inclusivity, social interaction, and engagement across ages and activities.

Context The project responds to Kaunas’s industrial urban fabric by preserving the original building volumes and referencing historic materials. The design maintains a dialogue between the site’s interwar heritage and the contemporary neighbourhood.

Sense of Place By honoring the building’s historical identity as a former printing house and mint, the project strengthens local authenticity and fosters a sense of belonging. The school becomes a cultural landmark and community anchor within the district.

Beauty The project combines raw industrial elements with modern architectural interventions, creating a dynamic and inspiring aesthetic. The interplay of materials, light, and spatial sequences enhances the visual and experiential quality of the facility.

26

CULTFORT Fortress Made Porous—From Defensive Structure to Cultural Commons

Overview

The CULTFORT - Urban Cultural Fortress in Sighișoara, Romania, is a restoration and adaptive reuse project of the historic Butchers' Tower and Bastion, part of the city's UNESCO-listed medieval fortifications. Led by ABRUPTARHITECTURA, initiated and implemented by Mihai Eminescu Trust and funded by Stichting Horizon and the EEA Grants, the project transformed these neglected monuments into a vibrant cultural and community space.

Using a minimal-intervention approach, the team preserved the original stone, timber, and lime plaster while adding subtle modern elements like interpretive signage and flexible exhibition spaces.

The tower now hosts cultural events, workshops, and exhibitions, while the bastion serves as a public garden and gathering space, reconnecting locals and visitors with Sighișoara's rich history. What makes CULTFORT remarkable is its sustainable and community-driven approach.

By reusing traditional materials and involving students and young professionals in the restoration process, the project fosters cultural pride, inclusivity, and environmental responsibility. Awarded for its heritage restoration excellence, it proves how small-scale interventions can revitalise historic sites while serving modern needs.



Images: Vlad Pătru, Cosmin Pavel, Mihai Eminescu Turst Foundation, CULTFORT, Sighișoara, Mureș County, Romania

Project	CULTFORT, Urban Cultural Fortress
Location	Sighișoara, Mureș County, Romania
Architects	ABRUPTARHITECTURA
Year of Completion	2023
Budget	118 250 € (approx.)
Type of Procurement	Direct Awarding
Project Type	Adaptive reuse of a historical building
Surface Area	
Tower	131 m ²
Bastion	262 m ²
Sustainability Labels	—
Website	www.turnulmacelarilor.ro

Awards	
01	Oltenia Muntenia Biennial, 2024—Award, "Restoration of Historical Monuments" Section
02	Architecture 6 Biennial, 2024—Award, "Public Space" Section
03	Bucharest Architecture Annual, 2023—Nomination, "Architecture and Heritage" Section



Davos Baukultur Quality System

Governance The project involved participatory governance, incorporating input from local youth through surveys and aligning with Sighișoara's Local Sustainable Development Strategy, ensuring transparency and community-driven decision-making.

Functionality The restored Butchers' Tower and Bastion are adaptable for long-term use, hosting exhibitions, workshops, and cultural events while preserving historic fabric, ensuring comfort through natural materials and passive ventilation.

Environment The project follows the "5Rs" principle—reusing original materials, repairing rather than replacing, and employing locally sourced, durable materials like lime mortar and timber to minimise waste and embodied energy.

Economy By revitalising a historic site within Sighișoara's UNESCO-listed center, the project boosts local tourism and cultural value, using low-maintenance traditional materials to ensure long-term economic sustainability.

Diversity The space fosters inclusive community engagement, accommodating diverse users (locals, tourists, youth) through exhibitions, workshops, and events that celebrate the multicultural heritage of Transylvania.

Context The design respects the historic and natural context, blending seamlessly with Sighișoara's medieval urban fabric and surrounding forest, using materials and techniques that honor the site's heritage.

Sense of Place The restoration strengthens local identity by preserving authentic historic features and inviting public interaction, fostering a deep emotional connection to the site's layered history.

Beauty The project's beauty lies in its authentic, understated aesthetic—weathered stone, timber, and the interplay of light and nature create a serene, contemplative atmosphere that resonates with visitors.

Curciu Fortified Church Ensemble Light Intervention— From Rural Heritage to Shared Space

Overview

The Curciu Fortified Church in Sibiu County, Romania, combines heritage restoration with a sensitive contemporary addition. The historic annex buildings of the medieval fortified church were carefully conserved, preserving their volumetric structure, Baroque details, and evidence of historical construction phases. Restoration work highlighted original elements such as walls, vaults, and beams, while adapting the buildings to modern standards of comfort and usability.

A lightweight pavilion and exterior staircase were introduced as a distinct, orthogonal intervention that complements the historic ensemble without imitation, providing functional space while maintaining the site's visual integrity.

The approach prioritises reversibility and minimal impact, respecting the medieval layout. The project supports cultural tourism and community engagement by offering spaces for events, workshops, and educational activities.

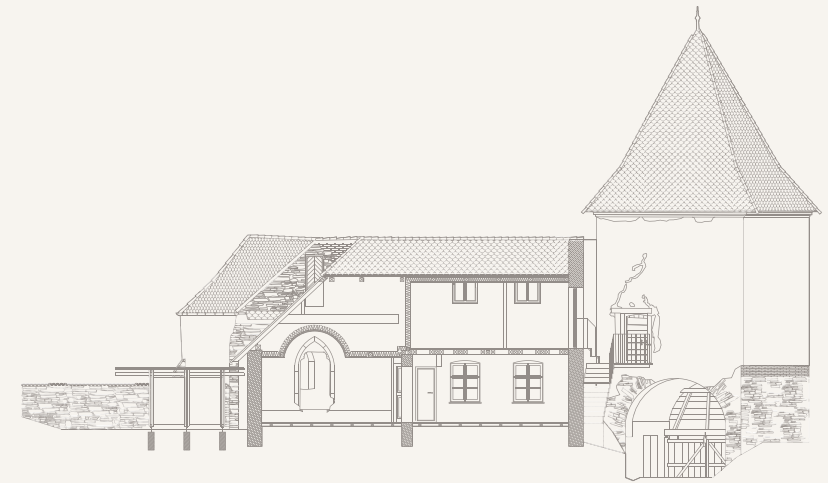
Sustainable principles underpin the design, including the reuse of existing structures, use of natural local materials, and lightweight, low-maintenance construction. Curciu Fortified Church demonstrates how adaptive reuse of underutilised heritage sites can enhance historical, social, and environmental value while creating a functional, engaging space for locals and visitors alike.



Images: Vlad Pătru, Curciu Fortified Church Ensemble, Curciu village, Sibiu county, Romania

Project	The Curciu Fortified Church Ensemble
Location	Curciu village, Sibiu county, Romania
Architects	Modul 28 BA (arh. Tudor Pavelescu, arh. Andra Nicolescu, arh. Robert Makkos, arh. Vlad Ducar)
Year of Completion	2024
Budget	€ 150,000
Type of Procurement	Direct awarding
Project Type	Adaptive reuse of a historical building
Surface Area	148 m ²
Sustainability Labels	—
Website	www.modul28.com/projects/curciu

Awards	
01	BETA, 2024—Nomination, Restoration and Refunctionalisation of the Annexes of the Fortified Church Ensemble in Curciu
02	A6 – Arhitectura 6, 2024—Nomination, Restoration and Refunctionalisation of the Annexes of the Fortified Church Ensemble in Curciu



Davos Baukultur Quality System

Governance The project is part of a broader dialogue involving the Fortified Churches Foundation and the Saxon community, which identified multiple potential sites. The chosen location was selected for its spatial qualities and the exemplary stewardship of the local caretaker, whose dedication and emotional attachment reflect the project's values.

Functionality The restored ensemble is designed for long-term adaptability. Minimal, reversible interventions preserve heritage while allowing flexible future uses. Durable, non-toxic materials and careful attention to daylight and ventilation ensure a healthy, comfortable environment.

Environment By revitalising an underutilised site, the project avoids unnecessary land development. Traditional construction methods and locally sourced materials were used. Existing elements were repaired, reused, or recycled where possible, fully embracing the "5Rs" principles.

Economy Situated in a culturally rich rural setting, the site supports leisure, tourism, and community engagement. Its adaptable design and durable materials ensure low maintenance costs, long-term value, and resilience to evolving needs.

Diversity Open, flexible spaces welcome a broad mix of users across age, ability, and background. The project fosters cultural exchange, shared use, and a strong, inclusive community dynamic.

Context Additions are reversible and sensitive to scale, materials, and the rhythm of the historic ensemble. Timber and metal elements complement rather than imitate the medieval architecture, enhancing spatial quality while respecting authenticity.

Sense of Place Careful restoration and subtle contemporary interventions strengthen local identity and historical continuity. The project fosters attachment, offering locals and visitors a meaningful connection to the site's layered history.

Beauty The combination of preserved heritage, lightweight modern additions, natural materials, and spatial clarity creates a serene, visually striking, and atmospheric environment that resonates with both aesthetic and cultural values.

28

PLATO Contemporary Art Gallery Architecture in Motion— From Slaughterhouse to Cultural Platform

Overview

PLATO Contemporary Art Gallery is an adaptive reuse project in Ostrava, Czechia, designed by KWK Promes and completed in 2022. The project transforms a derelict 19th-century municipal slaughterhouse into a 3,601 m² multifunctional cultural hub, commissioned by the Statutory City of Ostrava following an architectural competition.

The design preserves the building's industrial character—soot-stained brick walls, cast-iron columns, and robust masonry—while introducing contemporary elements that enable flexible cultural use. A defining feature is a system of pivoting concrete wall panels that can open the galleries

to the exterior, allowing exhibitions and public activities to extend into the surrounding spaces and blur the boundary between inside and outside. The historic complex of five interconnected volumes now hosts exhibition halls, a café, and community areas. Outside, the former brownfield has been transformed into the “Garden of Presence,” a biodiverse landscape with native meadows, permeable surfaces, retention basins, and a pond that enhances the site's ecological value. By combining material reuse, spatial flexibility, and landscape regeneration, the project demonstrates how industrial heritage can be reimagined as a dynamic cultural destination.

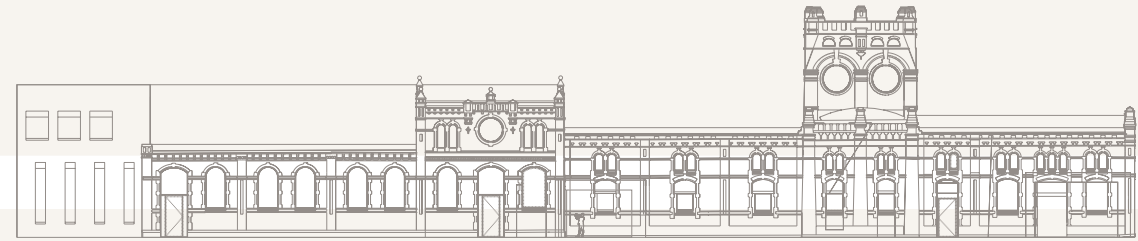


Images: uliusz Sokolowski; Jakub Certowicz, PLATO Contemporary Art Gallery, Ostrava, Czechia

Project	PLATO Contemporary Art Gallery
Location	Porážková 3395/26, 702 00 Moravská Ostrava a Přívoz, Ostrava, Czechia
Architects	KWK Promes: Robert Konieczny; Michał Lisiński; Dorota Skóra
Author Collaboration	Tadeáš Goryczka, Marek Golab Sieling
Year of Completion	2022
Budget	10,7 M€
Type of Procurement	Architecture Design Competition
Project Type	Public/institutional building; Adaptive reuse of a historical building; Public space; Gallery
Surface Area	3.601 m ²
Sustainability Labels	—
Website	www.kwkpromes.pl/en/plato-contemporary-art-gallery/16788

Awards

01	Mies van der Rohe Award, 2024—Finalist
02	Mies van der Rohe Award, 2024—Shortlisted
03	Mies van der Rohe Award, 2024—Nomination
04	BigMat International Architecture Award, 2023—National Prize
05	BigMat International Architecture Award, 2023—Special Mention
06	Grand Prix Architektů, 2023—Winner, Reconstruction Category
07	Česká cena za architekturu, 2023—Finalist
08	Patrimonium pro futuro (NPÚ), 2023—Main Extraordinary Award of the Director General
09	Patrimonium pro futuro (NPÚ), 2023—Winner, Monument Conversion Category
10	Stavba roku, 2023—Nomination
11	Paris Design Award, 2025—Winner, Best Design of Building Orientation System
12	un Design Award, 2025—Gold, Communication Design Category, Visual Identity



Davos Baukultur Quality System

Governance The project was developed through a public architectural competition and participatory programs that engaged stakeholders and the local community. This transparent process ensured inclusive decision-making and guided the adaptive reuse of the historic slaughterhouse.

Functionality The project creates flexible, multi-functional spaces that support exhibitions, community events, educational programs, and urban farming. Pivoting walls, generous daylight, and natural ventilation ensure healthy, adaptable, and long-term usable interiors.

Environment By revitalising a brownfield site and reusing the existing industrial structure, the project reduces embodied carbon and waste. Sustainable strategies including material recycling, soil remediation, and biodiversity enhancement support long-term ecological performance.

Economy The project strengthens the economic and cultural vitality of Ostrava by establishing a multifunctional cultural hub. Durable materials, adaptable interiors, and a central location contribute to long-term operational efficiency and value stability.

Diversity The project accommodates a wide range of users, including artists, students, visitors, and residents. Its combination of exhibitions, educational activities, and public spaces fosters inclusivity across ages, abilities, and backgrounds.

Context The project responds sensitively to the urban-industrial fabric of Ostrava by preserving original structural features and integrating contemporary interventions. The design maintains a dialogue with the surrounding streetscape, heritage, and brownfield landscape.

Sense of Place By highlighting the building's industrial history and maintaining authentic architectural elements, the project strengthens local identity and community attachment. The adaptive reuse establishes the gallery as a civic landmark within the city.

Beauty The project combines raw industrial character with carefully considered contemporary design elements. The interplay of materials, light, and spatial sequences creates an inspiring, poetic, and visually engaging environment.



KUNSTHALLE Praha Energy Rechanneled—From Power Infrastructure to Art Institution

Overview

Located in the heart of Prague, Czechia, KUNSTHALLE Praha is a groundbreaking adaptive reuse project that transformed the historic Zenger Transformer Substation (1931) into a vibrant cultural hub.

Originally an industrial powerhouse for Prague’s tram system, the building’s neoclassical envelope and parts of the original interior were meticulously preserved and reimaged. The project harmonises history and modernity, creating a dynamic space for art, dialogue, and community engagement. What makes KUNSTHALLE Praha remarkable is its commitment to sustainability and heritage.

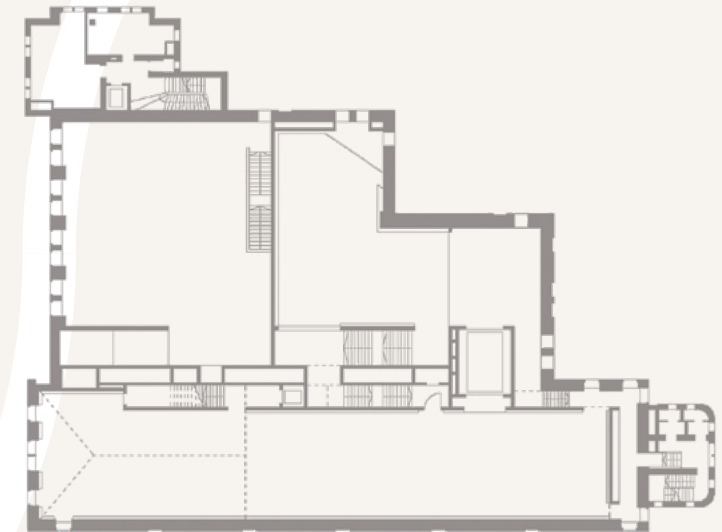
The team salvaged original materials—copper cables, porcelain insulators, and structural elements—integrating them into the new design, such as terrazzo floors and decorative features. The project also addressed critical challenges, including the removal of hazardous aluminous concrete and chemical contamination, ensuring both structural integrity and environmental responsibility. The spatial concept optimises the building’s layout, offering fluidly connected levels and panoramic views of Prague Castle. The result is a multifunctional space that houses exhibitions, a café, and educational activities, all while maintaining its original industrial function in the basement.



Images: Filip Šlapal, KUNSTHALLE Praha, Prague, Czechia

Project	KUNSTHALLE Praha
Location	Prague, Czechia
Architects	SCHINDLER SEKO ARCHITECTS
Year of Completion	2022
Budget	30 M€ (approx.)
Type of Procurement	Direct Awarding
Project Type	Public/institutional building; Adaptive reuse of a historical building
Surface Area	7,600 m ²
Sustainability Labels	—
Website	www.kunsthallepraha.org

Awards	
01	Grand Prix of Architecture, 2022—Main Prize/National Award
02	Building of the Year (Czech Republic), 2022—Winner
03	EUmies Awards, 2024—Nominee
04	Architizer A+Awards, 2023—Finalist



Davos Baukultur Quality System

Governance The project underwent a transparent, two-stage permitting process with active participation from heritage stakeholders and the public, ensuring inclusive decision-making and respect for its cultural monument status.

Functionality KUNSTHALLE Praha’s adaptive design replaces outdated structures with a durable monolithic wall system, optimising space for exhibitions while maintaining healthy environmental conditions and long-term flexibility.

Environment By adaptively reusing the existing substation and replacing hazardous materials, the project embodies circular economy principles, prioritising durability, reuse, and responsible land use.

Economy Located in central Prague, the transformed substation enhances long-term cultural and tourism value, using robust materials to minimise maintenance costs and maximise attractiveness as a public space.

Diversity The project fosters mixed-uses—combining ongoing industrial function with art exhibitions, a café, and educational programs—attracting diverse audiences and promoting community engagement.

Context The design respects the neoclassical façade’s historic harmony with Malá Strana while integrating contemporary elements like the bronze entrance bridge, creating a dialogue between old and new.

Sense of Place KUNSTHALLE Praha preserves the building’s industrial DNA and local identity, from restored architectural details to its naming after scientist Václav Karel Bedřich Zenger, strengthening visitors’ connection to the site.

Beauty The project’s aesthetic impact lies in its blend of neoclassical elegance and industrial memory, with features like the skylit café and panoramic views celebrated as visually striking and emotionally resonant.

30

Silesian Museum Katowice

Underground Culture—From Coal Mine to Public Landscape

Overview

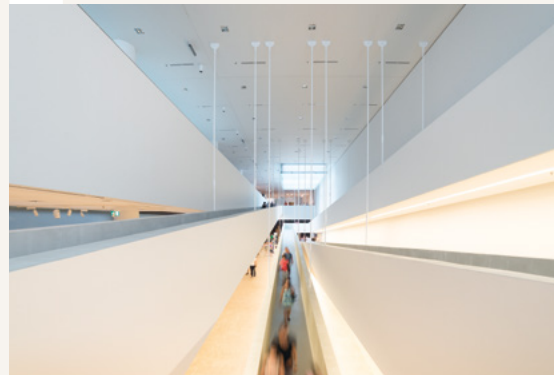
The Silesian Museum Katowice is an adaptive reuse project that transforms the former “Warszawa” coal mine into a contemporary cultural landmark, integrating Katowice’s industrial heritage into a vibrant public realm.

Most programmatic functions—including exhibition halls, education spaces, and conference facilities—are located underground, minimising surface impact and creating a “city park” with pathways, squares, and green spaces linking to Bogucki Park.

Above ground, abstract glass cubes house administration, ventilation, and daylight shafts, complementing the existing industrial structures. The design concept reinterprets the site’s “underground work culture” as “underground

high culture,” with daylight-filled subterranean galleries illuminated by the large glass cubes.

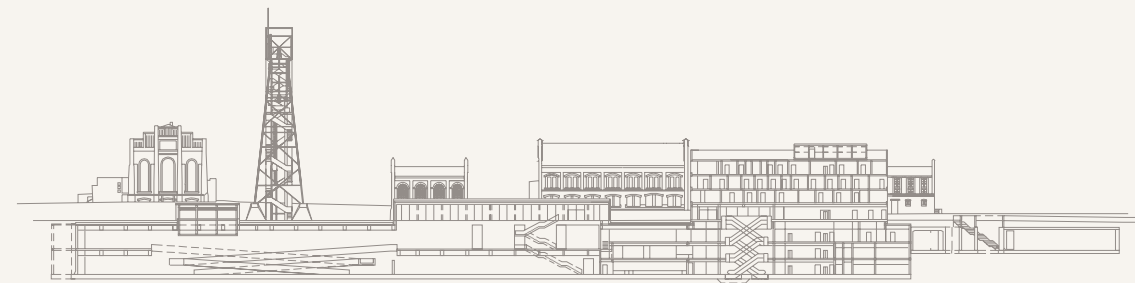
Historic elements, including the mine tower, were adapted for public use, while selected buildings now accommodate cafés and artists’ studios, maintaining the site’s layered identity. The museum enhances public access, cultural engagement, and urban identity while embedding sustainability through adaptive reuse, minimal surface construction, energy-efficient underground placement, and durable, reversible interventions. By combining industrial heritage preservation with contemporary design, Silesian Museum Katowice provides a multifunctional cultural hub, enriching public life and serving as a model for sustainable post-industrial redevelopment.



Images: Maciek Jezyk, Silesian Museum Katowice, Katowice, Poland

Project	Silesian Museum Katowice
Location	Katowice, Poland
Architects	Riegler Riewe Architekten
Year of Completion	2015
Budget	64,9 M€ (approx.)
Type of Procurement	Architecture Design competition
Project Type	Public/ institutional building; Adaptive reuse of a historical building
Surface Area	39.370 m ²
Sustainability Labels	—
Website	rieglerriewe.co.at/de/projekte/kultur-und-bildung/61-schlesisches-museum-katowice-de

Awards	
01	POLYTKA Architecture Award, 2014—Winner
02	Architecture of the Year in Silesia, 2014—Winner
03	Best Architects 15, 2015—Gold
04	Mies van der Rohe Award, 2015—Finalist
05	The Plan Award, 2015—Shortlist
06	AIT Award, 2016—1st Prize
07	4 Buildings Awards, 2019—Award, Public Space Category
08	Property Design Award, 2026—Special Prize for “City-Shaping Project of the Decade”



Davos Baukultur Quality System

Governance The museum began with a European-wide open competition, widely communicated via press and public events. Design and execution phases were transparent, and the site hosted pre-opening concerts and exhibitions, engaging the community early.

Functionality Flexible exhibition spaces and adaptive reuse of heritage structures ensure long-term relevance. Underground placement provides thermal stability, daylight, and ventilation, ensuring comfort and health for visitors.

Environment By placing most functions underground, the project minimises land use while integrating green public spaces. Durable construction, multifunctional spaces, and reuse of heritage elements promote sustainability and resource efficiency.

Economy The museum anchors Katowice culturally and economically. Durable materials, underground placement, and adaptive reuse reduce maintenance costs. Its success has increased local property value and spurred adjacent developments.

Diversity Serving cultural, recreational, educational, and public functions, the museum attracts a wide range of visitors. Together with nearby developments, it supports a vibrant, mixed-use district.

Context Historic industrial structures are preserved and highlighted, while abstract glass cubes complement rather than mimic them. The design respects scale, materiality, and heritage, enhancing the site’s identity.

Sense of Place The museum transforms industrial heritage into “underground high culture,” preserving iconic features and fostering emotional attachment, collective identity, and community engagement through the new city park.

Beauty Contrasting heavy industrial forms with light, transparent elements and natural lightboxes creates a visually striking, serene, and inviting environment. Above-ground green spaces further enhance aesthetic and experiential quality.



Nádvorie Collective Ground— From Fragmented Blocks to Urban Community

Overview

The Nádvorie in Trnava, Slovakia, completed in 2024 by Sadovsky & Architects with landscape architecture by LABAK, transforms historic burgher houses and additions—dating from the 14th to 20th centuries—into a vibrant 5,700 m² mixed-use creative center.

Privately commissioned with a €19 million budget through direct assignment, this adaptive reuse of national cultural monuments integrates residential, office, and public spaces, including cultural venues, coworking, student dorms, a bakery, restaurant, and event areas.

The semi-public courtyard, paved with stone revealing archaeological parcellation, serves as a flexible plaza for daily terraces and events, connecting the main square, pedestrian zone, and university park. Sustainability innovations feature prefabricated straw-wooden blocks in hybrid structures for low carbon footprint and breathability, alongside geothermal energy, wooden acoustic shading, and greenery to mitigate urban heat. Acclaimed with the CE.ZA.AR Slovak National Architecture Award 2018 and nominated for the EU Mies van der Rohe Award 2019, it revitalises the historic core while promoting cultural synergy and community engagement.



Images: BoysPlayNice, Matej Haker, Nora a Jakub Caprnkovci, Nádvorie, Trnava, Slovakia

Project	Nádvorie
Location	Trnava, Slovakia
Architects	Sadovsky & Architects
Year of Completion	2024
Budget	19 M€
Type of Procurement	Direct Awarding
Project Type	Residential building—social housing/housing bloc; Office building; Adaptive reuse of a historical building; Mixed-use building; Public space
Surface Area	5.700 m ²
Sustainability Labels	—
Website	www.sadovskyarchitects.sk
Awards	
01	CE.ZA.AR—Slovak National Award for Architecture, 2018—Winner
02	EU Mies van der Rohe Award, 2018—Nomination



Davos Baukultur Quality System

Governance featured participatory discussions with cultural, educational, gastronomic, and local business stakeholders, alongside city and heritage authorities, for transparent programming.

Functionality ensures long-term adaptability through flexible, multi-use spaces preserving built heritage, with healthy designs incorporating natural light, air, and sustainable materials.

Environment prioritises the “5 Rs” via restoration of devastated structures, traditional conservation methods, and eco-innovations like geothermal and low carbon prefabricates

Economy boosts attractiveness as a central hub near services, with durable, low-maintenance elements stabilising value and supporting tourism.

Diversity fosters vibrant mixed uses and inclusive communities, enabling synergies like artist-NGO collaborations across ages and backgrounds.

Context dialogues respectfully with the urban grain through harmonious extensions and material choices.

Sense of Place cultivates authenticity and belonging via historical layers and interactive daily life.

Beauty captivates with aesthetic harmony of restored and new elements, creating an inviting, atmospheric public garden.



Palace VEGA IT Vertical Renewal—From Ruin to Contemporary Landmark

Overview

The Palace VEGA IT Radnički is a striking example of architectural revival and adaptive reuse. Originally built in 1966 as the Radnički University, the building was severely damaged by a fire and left abandoned for two decades. Kuzmanov and Partners, in collaboration with VEGA IT, transformed the skeletal remains into a modern office building that preserves the structure’s historic identity while introducing contemporary design elements.

The project’s design concept focuses on maintaining the building’s verticality and slenderness, wrapping it in a minimalist frame that highlights its elegance and reinforces its status as a city landmark.

Inside, the building provides flexible, high-quality office spaces with natural light, effective ventilation, and noise protection, ensuring a comfortable and productive environment for VEGA IT’s workforce. What makes this project remarkable is its commitment to sustainability and urban integration. The design includes a “green curtain” of planters on the façade, contributing to the city’s green infrastructure. The building’s central location and multi-functional use, including a panoramic rooftop terrace, enhance its role as a vibrant urban hub.



Images: ReIja Ivančić, Palace VEGA IT, Novi Sad, Serbia

Project	Palace VEGA IT Radnički
Location	Novi Sad, Serbia
Architects	Kuzmanov and Partners
Year of Completion	2023
Budget	17 M€
Type of Procurement	Architecture Design Competition
Project Type	Office building
Surface Area	6 000 m ²
Sustainability Labels	—
Website	www.gradnja.rs/palata-vega-it-radnicki-novi-sad-kuzmanov-and-partners-tim-inzenjering

Awards

01	“Ranko Radović” Award, 2023—Award for Realised Architectural Work, ULUPUDS (Association of Fine Artists of Applied Arts and Designers of Serbia)
02	Aleksej Brkić Award, 2023 – Most Successful Realised Work in Architecture, UAS (Union of Architects of Serbia)



Davos Baukultur Quality System

Governance The project was shaped through public debate and an architectural competition, ensuring transparency and community involvement in the decision to restore rather than demolish the fire-damaged landmark.

Functionality The building offers adaptable, high-comfort workspaces with natural light, ventilation, and noise protection, while its central location ensures easy access to urban amenities.

Environment The design prioritises energy efficiency and durability, using systems for energy recovery and low-maintenance materials to reduce operational costs and environmental impact.

Economy Located in Novi Sad’s city center, the building boosts long-term economic value through flexible use, durable construction, and a rooftop terrace that enhances its appeal for both work and leisure.

Diversity As a tech company headquarters, it fosters a dynamic mix of young professionals, contributing to urban diversity and idea exchange within the city.

Context The building respects its urban surroundings, acting as a vertical landmark while maintaining a human-scale presence with a welcoming entrance plaza.

Sense of Place The reconstruction revives a historic city symbol, restoring its cultural significance and strengthening the community’s emotional connection to the landmark.

Beauty The project’s minimalist elegance and green façade have been widely embraced, enhancing the building’s aesthetic appeal and harmonious integration into Novi Sad’s skyline.



City Library Rijeka Knowledge Installed—From Industrial Complex to Civic Interior

Overview

The Rijeka City Library transforms the historic T-building of the former Rikard Benčić industrial complex into a modern public library and cultural hub, forming a core of Rijeka’s “Culture Block.” The project preserves industrial heritage—stone masonry, cast-iron columns—while adding glass, concrete, and steel interventions to meet contemporary functional and accessibility standards. Interiors host diverse programs for all ages, including youth, music, and film sections, plus services for people with disabilities.

An automated book sorting system reinforces the industrial identity while improving efficiency. The library reconnects abandoned industrial spaces to the urban fabric, creating new access points, outdoor areas, and links to neighbouring cultural institutions. Adaptive reuse, durable finishes, and flexible layouts ensure sustainability and future adaptability. By converting a derelict industrial site into a vibrant public space, the library strengthens Rijeka’s cultural identity while promoting sustainable urban regeneration.



Images: Domagoj Blažević, City Library Rijeka, Rijeka, Croatia

Project	City library Rijeka and park
Location	Rijeka, Croatia
Architects	Randić i suradnici d.o.o., Rijeka, Croatia
Structural Engineer	i.t.t. d.o.o., Rijeka, Croatia.
Year of Completion	2024
Budget	15 M€
Type of Procurement	Public Procurement—Type Not Specified
Project Type	Public/institutional building
Surface Area	5.852 m2
Sustainability Labels	—
Website	randic.hr/project/gradska-knjiznica-rijeka

Awards

01	Croatian Chamber of Architects Annual Awards (HKA), 2025— Medal for Contribution to the Culture of Building—Shortlisted
----	--



Davos Baukultur Quality System

Governance The project followed two public competitions (1998 urban planning, 2001 architectural) and aligned with the city’s European Capital of Culture 2020 plans, ensuring broad public and institutional engagement.

Functionality Flexible, open spaces adapt to diverse future uses. Key historic features—stone masonry, cast-iron columns—were preserved, while new interventions enhance accessibility, usability, and daylighting, supported by modern systems like an automated book sorter.

Environment Original structural elements were reused, including façade ornaments, columns, and roof beams repurposed for park features, exemplifying the “5 Rs” of sustainability.

Economy Structural reinforcements and durable materials extend the building’s lifespan beyond 150 years while minimising maintenance costs and sustaining long-term cultural and economic value.

Diversity Mixed uses—including library, museums, and Children’s House—combined with proximity to urban amenities, create a vibrant, inclusive environment for all ages.

Context The industrial site has been sensitively transformed into a public park integrated with surrounding urban fabric.

Sense of Place Adaptive reuse fosters a strong identity and community attachment, linking industrial heritage with contemporary cultural life.

Beauty The combination of restored industrial elements and modern interventions creates an aesthetically compelling and widely appreciated public space.



Concéntrico Temporary Urbanism—From Event to City Laboratory

Overview

Concéntrico, the International Festival of Architecture and Design in Logroño, Spain, initiated in 2015 by Javier Peña Ibáñez and the Fundación Cultural de los Arquitectos de La Rioja, culminates its decade-long journey in 2025.

With a €450,000 budget from mixed public-private sources, this annual event features site-specific temporary installations, exhibitions, and workshops across the city's historic fabric. Commissioned through open calls and competitions, it involves international architects to

rethink underused spaces, promoting urban renovation, sustainability, and community engagement.

Key innovations include circular design, climate adaptation prototypes like the Urban Climate Island, and participatory processes aligning with the New European Bauhaus. Acclaimed with the Premio Arquitectura CSCAE, ADI FAD Culture, and Premio Estrella de Europa, it transforms Logroño into a laboratory for inclusive, adaptive urban futures.



Images: Josema Cutillas, Concéntrico, Logroño, Spain

Project	Concéntrico
Location	Logroño, Spain
Architects	Javier Peña Ibáñez—Fundación Cultural de los Arquitectos de La Rioja
Year of Completion	2025
Budget	450 000 €
Type of Procurement	Open competition
Project Type	Public space
Surface Area	Not specified
Sustainability Labels	—
Website	concentrico.es/en

Awards

01	Premio Arquitectura, [Year]—Award, CSCAE
02	ADI FAD Culture Award, [Year]—Award, ADI FAD Association
03	Premio Estrella de Europa, [Year]—Award, Ayuntamiento de Logroño



Davos Baukultur Quality System

Governance features transparent open calls and collaborations with diverse stakeholders for inclusive decision making.

Functionality demonstrates adaptability through temporary, reusable interventions that test long-term urban solutions while ensuring user comfort.

Environment prioritises the “5 Rs” with low-impact, recycled materials and nature-based designs for responsible land use.

Economy enhances Logroño’s attractiveness as a cultural tourism hub with cost-efficient, value-stabilising methods.

Diversity fosters mixed uses and inclusive participation across ages, abilities, and backgrounds.

Context dialogues respectfully with historical sites via context-sensitive contemporary creations.

Sense of Place cultivates authenticity and belonging by revealing urban potential and strengthening identity.

Beauty captivates with aesthetic, atmospheric installations perceived as innovative and meaningful.

35

Amiens Street Urban Grain Restored—From Derelict Plots to Housing Fabric

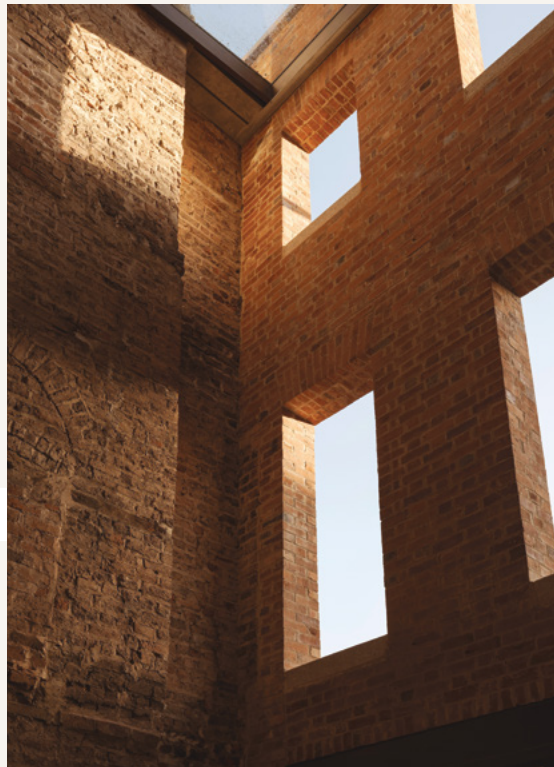
Overview

The 49-51 Amiens Street project in Dublin, Ireland, is a transformative restoration of three long-derelict Georgian plots into a vibrant mixed-use development. Designed by Lawrence and Long Architects, the project preserves the historic façade of No. 50 and reintroduces the original urban grain, while adding a contemporary brick-clad extension that houses 11 modern apartments and ground-floor commercial spaces.

A standout feature is the three-story atrium, a glazed, brick-lined space that serves as a communal entrance and private garden for residents. This design not only provides natural light and ventilation but also reconnects the building with the city, offering glimpses of restored Georgian details to passersby.

This project achieves an A2/A3 energy rating through sustainable systems like heat pumps and permeable paving, minimising environmental impact. What makes this project remarkable is its balance of heritage and innovation. By revitalising a neglected site in a disadvantaged area, it enhances the public realm, supports urban density, and fosters community pride.

Awarded the RIAI Housing Prize and nominated for the EU Mies Awards 2026, it exemplifies how thoughtful design can preserve history while meeting modern needs.



Images: Peter Molloy, Gavin Duncan, Amiens Street, Dublin, Ireland

Project	Amiens Street
Location	Dublin, Ireland
Architects	Lawrence and Long Architects
Year of Completion	2024
Budget	2,7 M€ (shell and core + fees, excl. VAT)
Type of Procurement	Direct Awarding
Project Type	Residential building—Social housing/housing bloc; Adaptive reuse of a historical building
Surface Area	836 m ²
Sustainability Labels	—
Website	www.lawrenceandlong.com
Awards	
01	RIAI Awards, 2026—Winner, Housing Category
02	EUmies Awards, 2026—Nomination



Davos Baukultur Quality System

Governance The project followed a transparent planning process, engaging with local authorities and the public, resulting in unanimous approval and positive community feedback, as demonstrated during Dublin’s Open Architecture Day.

Functionality The design ensures long-term adaptability and comfort, with dual-aspect apartments for natural light and ventilation, and a flexible atrium space that enhances both private and communal use.

Environment The project prioritises sustainable reuse and circularity, refurbishing derelict structures, using natural materials (brick, lime, wood), and achieving an A2/A3 energy rating through efficient systems and sustainable drainage.

Economy Located in a revitalising urban area, the project boosts long-term value by combining mixed-use spaces (residential and commercial) with durable, low-maintenance materials, contributing to the neighbourhood’s renewal.

Diversity The building supports mixed-use and inclusive living, offering 11 apartments of varying sizes and ground-floor commercial spaces, catering to diverse users and fostering urban vibrancy.

Context The design restores the historic urban grain, reinstating the legibility of the original Georgian plots while blending contemporary and traditional elements to enhance the streetscape and public realm.

Sense of Place The project revives a neglected landmark, creating a strong sense of identity through its illuminated atrium and thoughtful integration of historic and modern elements, fostering community connection.

Beauty The atrium and brick façades create a visually striking and functional space, offering residents a unique experience while allowing passersby glimpses of the historic fabric, blending aesthetic appeal with urban engagement.

36

Department of Climate, Energy and the Environment HQ Deep Transformation—*Obsolete to Climate-Ready*

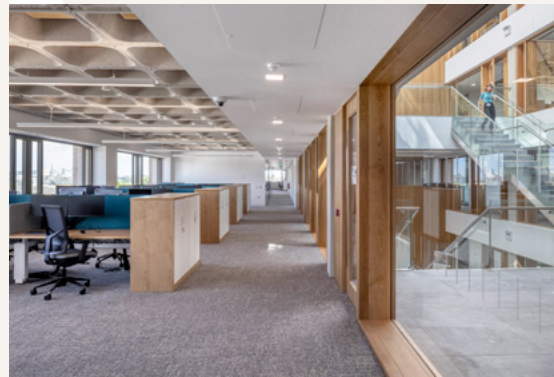
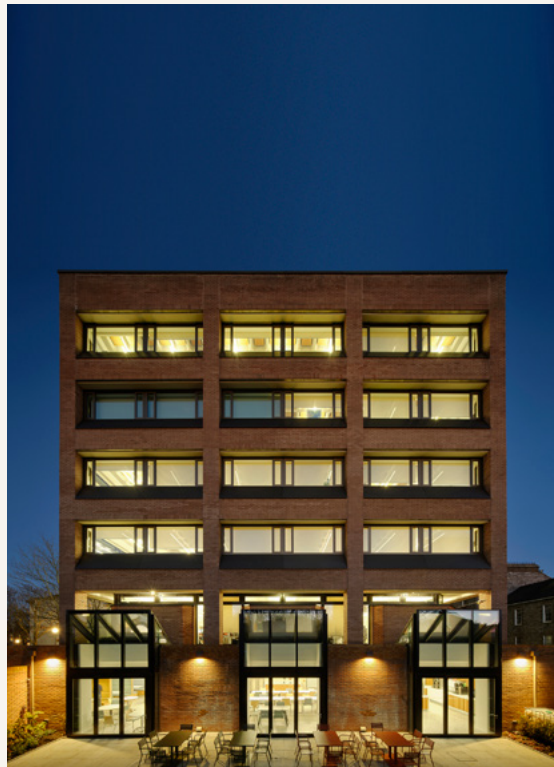
Overview

Tom Johnson House is a five-storey office building with a basement. It first opened just as Ireland acceded to the European Economic Community in 1973. A long brown brick block, it parades itself in the heart of the former British barracks at Beggars Bush. A recent transformation has reversed decades of performance deficiencies. The project team of client Government Department, Office of Public Works Estate Management, Duggan Brothers building contractors and their sub-contractors – led by Architectural Services within Office of Public Works – has upgraded all of its building systems, facade and its interior.

Halfway along its length, sections of each floor have been removed, making room for a new staircase. Landings are wide and deep, with space for colleagues to stop and gather. Daylight and fresh air are drawn down through this

timber-lined void and on into the centre of the building like never before. At the ground floor, the building has been cleared of historic additions to make a pleasant entrance foyer with a connection to the changing patterns of the sky above.

The building’s structure and components have been reconditioned to celebrate the character of this often under-valued 20th century un-Protected Structure building type. This approach has dramatically reduced harm to the environment when compared with the prospect of demolition and rebuild. Tom Johnson House is set now for the next fifty years of service, supporting the business of Government. The deep retrofit was funded by the EU Commission through the EU’s Recovery and Resilience Facility.

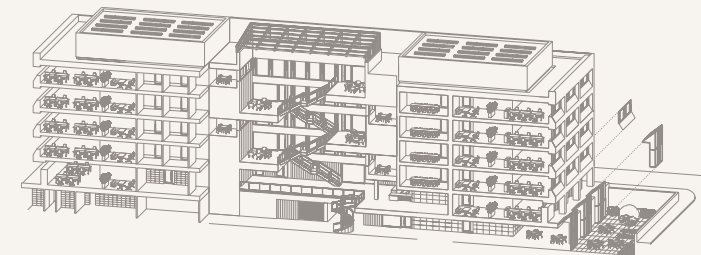


Images: Paul Tierney, Department of Climate, Energy and the Environment HQ, Dublin, Ireland

Project	Department of Climate, Energy and the Environment Headquarters
Location	Dublin, Ireland
Architects	Office of Public Works (OPW)
Architectural Services:	Ciaran O’ Connor (State/Principal Architect)—retired; Edel Collins (Assistant Principal Architect); Dan Costelloe (Design Team Leader/ER); Brian Attley (Senior Architect); Susan Nakazibwe (Site Architect); Shane Sugrue (Architectural Graduate); Philip Ball (Architectural Graduate)
Year of Completion	2023
Budget	€56,7 M€
Type of Procurement	Direct Awarding
Project Type	Office building; Flagship headquarters for a Government Department including office accommodation; Support spaces and services; Cyber security infrastructure
Surface Area	10,069 m ²
Sustainability Labels	Building Energy Rating—A2 Rating; Primary Energy Use Indicator: 47.27 kWh/m ² /y; Carbon Dioxide Emissions Indicator: 6.05 kgCO ₂ /m ² /yr; Life Cycle Analysis (“One Click” LCA) A Rating; Cradle to grave (A1-A4, B4-B5, C1-C4) CO ₂ emissions: 412 kgCO ₂ /m ²
Website	www.gov.ie/en/office-of-public-works/press-releases/opw-retrofit-project-of-tom-johnson-house-included-in-irelands-national-recovery-and-resilience-plan

Awards

01	RIAI Awards (Royal Institute of the Architects of Ireland), 2024—Winner, Sustainability
02	RIAI Awards (Royal Institute of the Architects of Ireland), 2024—Winner, Workplace and Fit-out
03	Ireland’s Wood Awards, 2024—Winner, Large Public Building
04	Ireland’s Wood Awards, 2024—Commended, Restoration, Conservation & Reuse
05	Ireland’s Climate Change Leadership Awards, 2024—Winner, Green Building Project of the Year
06	Irish Construction Industry Awards, 2024—Commercial Project of the Year
07	SEAI Awards (Sustainable Energy Authority of Ireland), 2024—Finalist, Energy in Buildings
08	Irish Structural Awards (Institution of Structural Engineers), 2025—Winner, Medium Project Category
09	Irish Construction Industry Awards, 2024—Finalist, Green Project of the Year
10	Irish Building & Design Awards, 2024—Finalist, Building Project of the Year



Davos Baukultur Quality System

Governance Inter-departmental consultation guided occupancy, working patterns, and wellbeing standards; the process followed national public works and statutory approval procedures.

Functionality Designed for a 60/70-year lifespan, with modular offices, flexible meeting rooms, bookable spaces, and removable auditorium seating. Daylight, natural ventilation, acoustic treatments, and sensor-controlled lighting ensure user comfort.

Environment The existing building footprint and courtyards have been preserved, while circular economy principles guide the project. Over 90% of construction waste is diverted through reuse, recycling, and material recovery. The design maximises the reuse of the existing structure and prioritises durable, low-carbon materials.

Economy Location near transport, amenities, and green space enhances long-term attractiveness; materials and methods ensure low maintenance and long-term value.

Diversity Supports mixed uses and diverse users with accessible facilities, flexible conference spaces, and inclusive social areas.

Context Refurbishment respects the historic barracks setting, preserving external appearance, urban grain, and materiality.

Sense of Place Retains local character and heritage, landscaped courtyards and social spaces foster attachment and identity.

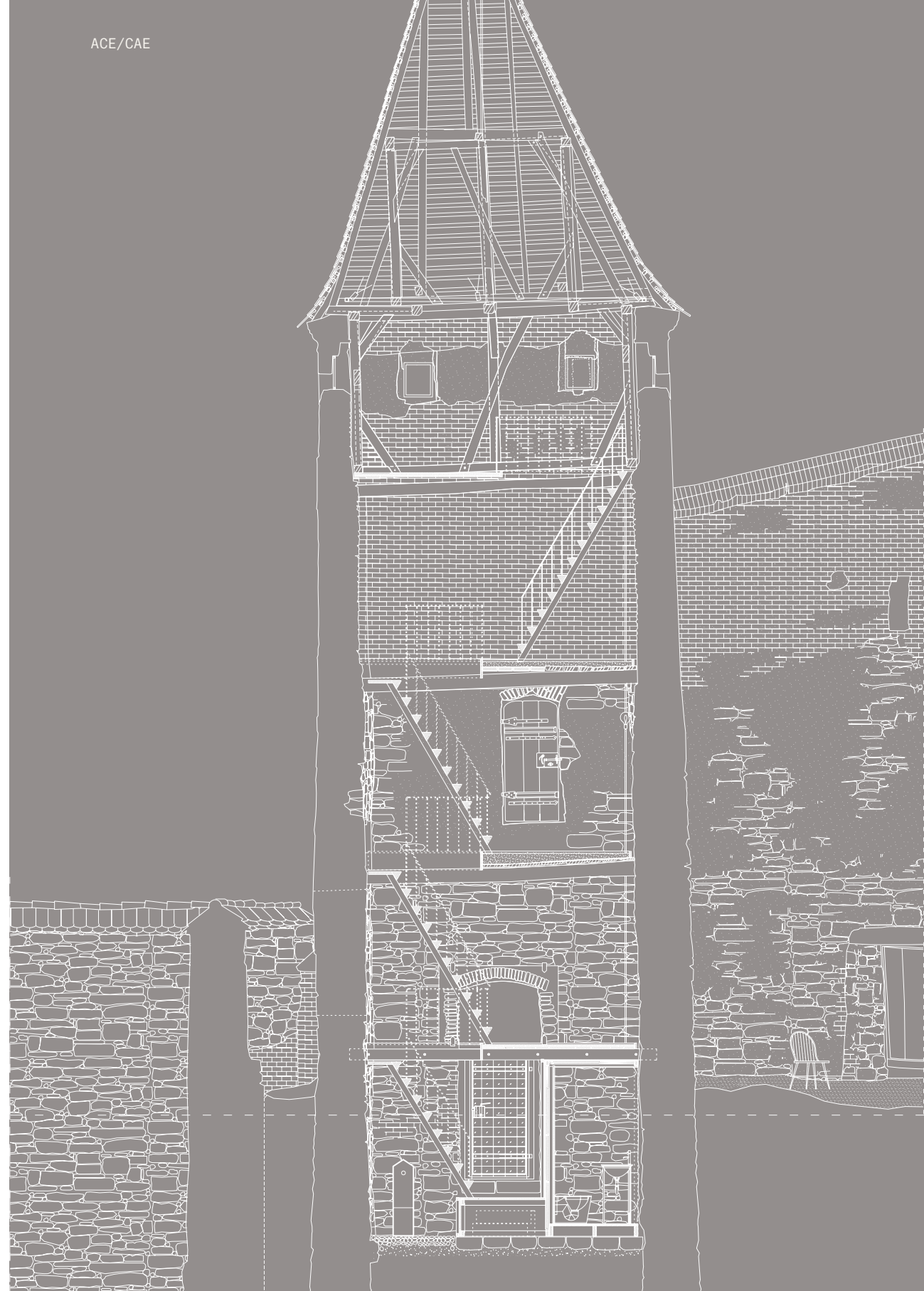
Beauty A new central atrium enhances natural daylight and views, while open-plan layouts foster a visually engaging and harmonious environment, recognised for its award-winning design.



Image: Hampus Berndtson, Thoravej 29, Copenhagen, Denmark



Image: Hampus Berndtson,
Thoravej 29, Copenhagen, Denmark



Co-funded by
the European Union

This publication is co-funded by the European Union through the Creative Europe Programme.

Disclaimer: Funded by the European Union. Views and opinions expressed are however those of the author(s) only and do not necessarily reflect those of the European Union. Neither the European Union nor the granting authority can be held responsible for them.

Form Follows Transformation—
Moments that redefine Europe's
existing buildings

Mom
rede
exist

āīcē

āīcē—
cāē.
eu

